

**YANGON UNIVERSITY OF ECONOMICS  
DEPARTMENT OF APPLIED ECONOMICS  
MASTER OF PUBLIC ADMINISTRATION PROGRAMME**

**A STUDY ON PERCEIVED RISK OF CRIMINAL VICTIMIZATION  
IN HLAING THAR YAR TOWNSHIP, YANGON REGION**

**JULY MYINT  
MPA-22 (22<sup>nd</sup> BATCH)**

**JUNE, 2025**

**YANGON UNIVERSITY OF ECONOMICS  
DEPARTMENT OF APPLIED ECONOMICS  
MASTER OF PUBLIC ADMINISTRATION PROGRAMME**

**A STUDY ON PERCEIVED RISK OF CRIMINAL VICTIMIZATION  
IN HLAING THAR YAR TOWNSHIP, YANGON REGION**

**Supervised by:**

Dr. Thet Mon Soe  
Lecturer  
Department of Applied Economics  
Yangon University of Economics

**Submitted by:**

July Myint  
MPA - 22  
MPA 22<sup>nd</sup> Batch

**JUNE, 2025**

**YANGON UNIVERSITY OF ECONOMICS**  
**DEPARTMENT OF APPLIED ECONOMICS**  
**MASTER OF PUBLIC ADMINISTRATION PROGRAMME**

This is to certify that this thesis entitled “**A STUDY ON PERCEIVED RISK OF CRIMINAL VICTIMIZATION IN HLAING THAR YAR TOWNSHIP, YANGON REGION**” submitted as a partial fulfilment towards the requirements for the Degree of Master of Public Administration has been accepted by the Board of Examiners.

**BOARD OF EXAMINERS**

.....

Dr. Tin Tin Htwe

(Chairperson)

Rector

Yangon University of Economics

.....

Dr. Cho Cho Thein

(Examiner)

Pro-Rector

Yangon University of Economics

.....

Dr. Su Su Myat

(Examiner)

Professor/Head

Department of Applied Economics

Yangon University of Economics

.....

Daw N Khum Ja Ra

(Examiner)

Associate Professor

Department of Applied Economics

Yangon University of Economic

.....

Dr. Thet Mon Soe

(Supervisor)

Lecturer

Department of Applied Economics

Yangon University of Economics

**JUNE, 2025**

## **ABSTRACT**

Victimization is an unpredictable and often unavoidable reality that affects people across all societies, from ancient civilizations to the modern era. This study highlights the perceptions of victimization among residents in Hlaing Thar Yar township, a densely populated and industrialized area in Yangon, Myanmar. This study uses a descriptive method, with surveys conducted among 377 respondents from three selected wards, focusing on both direct and indirect victimization experiences. The findings indicate that theft, robbery and physical assault are highly prevalent, and a significant number of respondents have also been exposed to sexual abuse. Additionally, the study explores the role of environmental factors such as poor lighting, presence of intoxicated individuals and unsafe public spaces contribute significantly to feelings of insecurity. It also analyzes the precautionary measures adopted by residents and the psychological responses shaped by crime experiences. The study suggests that government needs to improve for urban safety, enhance public awareness, and promote community-based crime prevention efforts in Hlaing Thar Yar Township and similar urban contexts in Myanmar.

## ACKNOWLEDGEMENTS

First and foremost, I would like to express my sincere gratitude to Yangon University of Economics and the Master of Public Administration (MPA) Program for giving me the invaluable opportunity to pursue this academic journey.

I am especially thankful to Professor Dr. Tin Tin Htwe, Rector of Yangon University of Economics, and to Professor Dr. Cho Cho Thein and Professor Dr. Tin Tin Wai, Pro-Rectors, for their continuous support and for providing an enabling environment to carry out this study.

My heartfelt appreciation also goes to Professor Dr. Kyaw Min Htun, Pro-Rector (Retired), for his excellent teaching, mentorship, and guidance throughout my studies. I am deeply indebted to Professor Dr. Su Su Myat, Program Director and Head of the Department of Applied Economics, for her unwavering support, thoughtful supervision, and encouragement throughout the MPA program, which enabled me to successfully complete my degree. I also extend my thanks to the members of the examination board for their valuable feedback and academic guidance in the completion of this research.

I would like to extend special thanks to all the professors, associate professors, and lecturers of the MPA Program for their dedication and for imparting a broad range of knowledge in public administration over the past two years.

A special note of appreciation goes to Dr. Thet Mon Soe, Lecturer at Yangon University of Economics, for her dedicated supervision, insightful advice, continuous encouragement, and constructive suggestions, all of which played a vital role in the successful completion of this thesis.

I am also grateful to my fellow classmates from the 22<sup>nd</sup> Batch of the MPA Program for their friendship, cooperation, and mutual support throughout this academic journey. Finally, I offer deep gratitude and gratefulness to all the persons who contributed in different ways to my paper.

# TABLE OF CONTENTS

	<b>Page</b>
<b>ABSTRACT</b>	i
<b>ACKNOWLEDGEMENTS</b>	ii
<b>TABLE OF CONTENTS</b>	iii
<b>LIST OF TABLES</b>	v
<b>LIST OF FIGURE</b>	vi
<b>LIST OF ABBREVIATIONS</b>	vii
<b>CHAPTER I INTRODUCTION</b>	
1.1 Rationale of the Study	1
1.2 Objective of the Study	2
1.3 Method of Study	2
1.4 Scope and Limitations of the Study	2
1.5 Organization of the Study	2
<b>CHAPTER II LITERATURE REVIEW</b>	
2.1 The Concept of Victimization	4
2.2 Causes of Victimization	7
2.3 Risks of Victimization	9
2.4 Theoretical Perspectives on Fear of Crime	10
2.5 Victimization Prevention Measures	12
2.6 Reviews on Previous Studies	15
<b>CHAPTER III OVERVIEW OF VICTIMIZATION RISK IN MYANAMR</b>	
3.1 Rules, Regulations and Policies of crime in Myanmar	17
3.2 Profile of Myanmar Police Force	19
3.3 Victimization risk in Myanmar	22
3.4 Types of Victimization and Crime in Yangon	27
<b>CHAPTER IV SURVEY ANALYSIS</b>	
4.1 Survey Profile	30
4.2 Survey Design	32
4.3 Survey Results	34

## **CHAPTER V CONCLUSION**

5.1 Findings	45
5.2 Suggestions	46

## **REFERENCES**

## **APPENDIX**

## LIST OF TABLES

<b>Table No.</b>	<b>Description</b>	<b>Page</b>
3.1	Law Related to Crime in Myanmar	18
3.2	The selected crimes by type of offence in Myanmar from 2017 to 2022	24
3.3	The selected crimes rate by type of offence in Myanmar from 2017 to 2022	25
3.4	The selected crimes by type of offence in Yangon	28
4.1	Number of Households and Population of Hlaing Thar Yar Township (East & West)	31
4.2	Sample of the survey area	33
4.3	Five-point Likert Scale for Respondents and Measuring Level	34
4.4	Demographic Characteristics of the Respondents	35
4.5	Respondents Perceptions about Victimization Risks (Direct Victimization)	38
4.6	Respondents Perceptions about Victimization Risks (Indirect Victimization)	39
4.7	Environmental Features	40
4.8	Perceived Risk of Victimization	42
4.9	Precautionary Measures Against Victimization	43

## **LIST OF FIGURES**

<b>Figure No.</b>	<b>Description</b>	<b>Page</b>
3.1	Organization Chart of Myanmar Police Force	21

## **LIST OF ABBREVIATIONS**

UN	United Nations
UNHCR	United Nations High Commissioner for Refugees
SCP	Situational Crime Prevention
CID	Criminal Investigation Department
UNODC	United Nations Office on Drugs and Crime
UNESCO	United Nations Educational, Scientific and Cultural Organization
TIP	Trafficking in Person
NCPS	National Crime Prevention Strategy
POTI	Police Officer Training Institute of Myanmar Police Force
POTTI	Police Officer Tactical Training Institute

# CHAPTER I

## INTRODUCTION

### 1.1 Rationale of the Study

Criminal victimization is a frightening and unsettling experience for many people. It is unpredictable, largely unpreventable and often unexpected. It is a pervasive social phenomenon that has been observed across all societies from the ancient times to our modern-day. It affects individuals' standard of living and influences their everyday behaviors. Crime may significantly affect a person's daily life. Additionally, gender, socioeconomic, and physical inequities affect crime fear.

Individual vulnerability, prior victimization, and local context all affect perceived victimization risk. Crimes at our workplaces, homes, or neighborhoods might indirectly influence us and heighten our fear of exposure. We are not simply influenced by crimes in a mass-media society (Higgins, 2021).

Crime dread is substantially greater than crime exposure. This implies that many people who have never been personally victimized may dread crime. Crime dread is influenced by neighborhood occurrences, family attacks, and media coverage (Hale, 1996).

Crime is not the only feeling people feel when they fear victimization. Crime victims may experience fear, rage, retribution, and melancholy. Not just women and seniors are victims of crime. Being a minority might potentially increase crime due to socioeconomic position. Women commit more crimes because they feel more vulnerable (Warr 1985, Gardner 1995, Fisher and Sloan 2003).

Another society whose standard of living affected by crime is elders. In the event of a crime, they have the same self-defense disadvantage as women. Studies show that aging increases crime anxiety (Clemente and Kleiman, 1977).

Crime and public safety are major problems in Yangon, Myanmar's largest and densest metropolis. The city's fast urbanization and growing population lead to theft, robbery, pickpocketing, and physical attacks, especially in busy places and public

transportation. These crimes have harmed Yangon's safety, quality of life, and social situations.

In Yangon region, Hlaing Thar Yar Township is one of the most populous, industrialized and socially vulnerable areas. Originally established as a resettlement zone, the township has rapidly expanded due to internal migration and now hosts a large population of factory workers living in overcrowded conditions. The area is frequently affected by high rates of crime such as theft, robbery, physical assault, sexual violence, and drug-related offenses, particularly in industrial zones and informal settlements. Therefore, it is essential to study the residents on perceived risk of victimization in Hlaing Thar Yar township and investigate how residents perceive their risk of victimization and how they adapt their behaviors for safety.

## **1.2 Objective of the Study**

The objective of this study is to examine the residents' perceptions on perceived risk of victimization in Hlaing Thar Yar Township, Yangon region.

## **1.3 Method of Study**

The study is descriptive using primary and secondary data. This research chose Yangon's Hlaing Thar Yar Township. Primary data were collected from a survey conducted with a sample of 377 respondents. Secondary data is collected from related previous research paper, website, Ministry of Home Affairs and Central Statistical Organization under Ministry of Planning and Finance.

## **1.4 Scope and Limitations of the Study**

The study area mainly focuses on the residents of Hlaing Thar Yar Township, Yangon Region in Myanmar. In this thesis the target population was over 18 years old who live in Yangon. Therefore, this survey cannot represent the whole population. Survey data are collected from April to May 2025.

## **1.5 Organization of the Study**

The study is included five chapters. Chapter I introduces the study's premise, aims, method, scope, and constraints, and concludes with its organization. Chapter II reviews related literature. The third chapter covers Myanmar victimization risk. Survey

analysis is in Chapter IV. Chapter V concludes with study findings, recommendations, and further research.

## CHAPTER II

### LITERATURE REVIEW

#### 2.1 The Concept of Victimization

Victimization is the result of someone intentionally harming or destroying another's property. A crime victim is someone who is physically, emotionally, or financially harmed by another. According to the 2010 UN Convention on Justice and Support for Victims of Crime and Abuse, victims are “natural persons who, individually or collectively, have suffered harm, including physical or mental injury, emotional suffering or economic loss or violations of fundamental rights.”

It also refers to how criminals hurt people or communities. This physical, emotional, psychological, or financial injury greatly impacts victims' security and well-being. According to Karmen (2015), “victimization is an event that occurs when a crime causes direct harm to a person or group of people.” Victims may endure stress, terror, loss of faith in society, financial loss, bodily injury, and long-term mental health issues including anxiety and despair.

Andrew Karmen called victimization “asymmetrical interpersonal relationship that is abusive, painful, destructive, parasitical and unfair.” Firsthand victims encounter illegal acts and its effects, whereas indirect victims include family members and loved ones (Karmen, 2012).

Karmen (2015) defined direct victimization as a harm experienced firsthand by individuals as a result of criminal acts, such as physical attacks, sexual violence, theft, or intimidation. The person suffers the consequences of the offender's actions directly. The major types of direct victimization are criminal victimization, property victimization, sexual victimization and domestic or intimate partner victimization. Indirect victimization refers to the psychological, emotional, or social harm experienced by individuals who are not the primary target of a crime, but who are affected because of their relationship to the direct victim, witnessing the event, or being part of a traumatized community. According to Karmen, indirect victims may include family members, close friends, or witnesses who suffer emotionally as a result of a loved one's victimization. A key form of indirect victimization is secondary

victimization, which occurs when institutions such as the police or courts, treat victims insensitively leading to additional psychological harm.

### 2.1.1 Types of Victimization

According to Doerner and Lab (2017), victimization can be classified into several major categories:

- (i) **Criminal Victimization:** Victimization resulting from violations of criminal law, such as assault, robbery, homicide, and theft.
- (ii) **Domestic or Intimate Partner Victimization:** Abuse or violence between partners or family members, including physical and emotional.
- (iii) **Sexual Victimization:** Includes rape, sexual assault, harassment and exploitation. It can happen in various contexts (e.g., intimate, institutional, or public).
- (iv) **Child Victimization:** Refers to physical, emotional or sexual abuse, as well as neglect or exploitation of minors.
- (v) **Elder Victimization:** Abuse or neglect targeting older adults, often by caregivers or family members.
- (vi) **Cyber Victimization:** Occurs through digital platforms, involving cyberbullying, online scams, identity theft, or revenge pornography.
- (vii) **Secondary Victimization:** When institutions (e.g., police, courts, media) retraumatize the victim through insensitive handling, victim-blaming, or procedural injustice.
- (viii) **Victimization by the State:** Harm caused by government actions or inaction, including wrongful imprisonment, police brutality, or bureaucratic neglect.

### 2.1.2 Types of Crime

Ioannou et al. (2015) classifies crimes into five major categories:

- (i) **Violent Crimes:** These are offenses that involve causing or threatening physical injury to another person, including crimes such as murder, rape, assault, and robbery.
- (ii) **Property Crimes:** These crimes involve the unlawful taking or destruction of another person's property, including burglary, larceny, arson, and vandalism.
- (iii) **White-Collar Crimes:** These are non-violent offenses typically carried out by people in respected or professional positions as part of their occupational

activities, including acts like fraud, embezzlement, tax evasion and insider trading.

- (iv) **Organized Crimes:** Committed by structured groups operating illegal businesses or activities, such as drug trafficking, gambling, prostitution, and money laundering.
- (v) **Victimless Crimes:** These crimes do not directly harm another person but violate social norms or laws, such as prostitution, drug use, gambling, and public drunkenness.

Felson & Boba (2010) expand on this classification by highlighting various types of crime based on their nature, impact, and legal classification. Hagan (2009) identifies common types of crime, including:

- (i) **Violent Crimes:** These offenses involve the actual use or threat of physical violence toward an individual or group, often leading to injury or harm. Common examples include murder, assault, robbery, rape, and domestic violence.
- (ii) **Property Crimes:** Unlawful interference with someone else's property, motivated by financial gain or intent to damage. Examples include burglary, theft, arson, vandalism, and trespassing.
- (iii) **White-Collar Crimes:** Nonviolent business or professional transgressions, frequently financially motivated. Insider trading, embezzlement, money laundering, tax evasion, and identity theft are examples.
- (iv) **Cybercrimes:** These crimes involve the use of computers, digital systems or the internet to carry out unlawful acts including hacking, phishing scams, online fraud, identity theft, cyberbullying, and spreading malware or viruses.
- (v) **Drug-Related Crimes:** Involvement in the production, distribution, possession, or use of illegal drugs, often linked to organized crime syndicates. Examples include drug trafficking, drug possession, manufacturing illicit substances, and operating drug dens.
- (vi) **Sexual Offenses:** Illegal activities involving non-consensual sexual acts or exploitation, including rape, sexual assault, child pornography, prostitution, and human trafficking.
- (vii) **Financial Crimes:** Illegal activities aimed at defrauding individuals, organizations, or financial institutions for monetary gain, such as fraud, bribery, corruption, money laundering, and forgery.

- (viii) **Organized Crimes:** Criminal activities carried out by structured groups with hierarchical structures, engaging in activities like drug trafficking, extortion, smuggling, racketeering, and money laundering.
- (ix) **Hate Crimes:** These offenses stem from prejudice against traits like race, religion, ethnicity, gender identity, or sexual orientation, often targeting individuals or groups to intimidate, harm, or terrorize them emotionally or physically.

These categories are not mutually exclusive, and many crimes can fit into numerous categories depending on their circumstances.

## 2.2 Causes of Victimization

A complex interaction of psychological, social, cultural, environmental, and technical elements causes victimization. Understanding these factors is essential to creating effective preventative and intervention measures. Certain origins or qualities may put people at risk of victimization owing to vulnerabilities that expose them to harm.

### (i) Social and Economic Factors

Socioeconomic status affects victimization risk. Low-income households, ethnic minorities, and disabled people are at increased risk owing to insufficient resources, safe surroundings, and support networks. Due to societal disparities and power dynamics, demographic variables including age, gender, ethnicity, and sexual orientation also increase susceptibility.

Moreover, behavioral patterns like substance abuse, reckless conduct, or engagement in criminal activities can further expose individuals to dangerous circumstances. Psychological aspects, including mental health conditions such as depression or trauma, can impair judgment and increase susceptibility to harm. Lifestyle choices, such as one's occupation, social circles, and leisure activities, also shape the degree of exposure to potential threats. For instance, individuals working late-night shifts or associating with high-risk groups are more likely to encounter victimization.

## **(ii) Psychological Factors**

Mental health concerns including poor self-esteem, depression, and trauma can impede danger recognition and response, making victims more vulnerable. Social networks also affect risk; negative peer influences or the absence of supportive relationships can make individuals more susceptible to harm. Additionally, deception and manipulation are common tactics used by perpetrators who exploit emotional or psychological vulnerabilities, as seen in cases involving scams, grooming, or coercive control.

People with psychological vulnerabilities may be less likely to identify threats or defend themselves, making them easier targets for perpetrators (Finkelhor & Asdigian, 1996). Furthermore, individuals with prior experiences of abuse are at higher risk of victimization due to emotional distress or impaired judgment (Briere & Jordan, 2004).

## **(iii) Cultural Factors**

Cultural beliefs and societal norms can play a pivotal role in shaping victimization patterns. In communities marked by social disorganization where there is poverty, weakened social bonds, and limited access to services crime rates and victimization tend to be higher. Exposure to violence in the home or community can normalize aggression and increase both victim and perpetrator rates. Cultural attitudes that condone violence, reinforce gender stereotypes, or blame victims contribute to an environment where victimization is tolerated or overlooked. In many societies, women and children face heightened risks due to prevailing cultural norms that emphasize male dominance or trivialize gender-based violence.

## **(iv) Environmental Factors**

The physical and social environment can greatly influence victimization. Community characteristics such as high crime rates, poor infrastructure, and lack of social cohesion increase the risk of becoming a victim. People living in neglected or unsafe neighborhoods are more frequently exposed to criminal activities and lack protective social networks. Additionally, natural and man-made disasters such as wars, earthquakes, or pandemics can displace populations and weaken institutional support, making individuals more vulnerable to exploitation.

Living in high-crime areas, poorly lit streets, or areas with limited policing increases exposure to criminal acts (Newman, 1972). Natural disasters and conflict

situations also exacerbate risks, as displaced or crisis-affected populations often lack stable protection and are exposed to opportunistic crimes (UNHCR, 2022).

#### **(v) Technological Factors**

The rapid advancement of digital technologies has introduced new forms of victimization. The internet and social media platforms have become avenues for cyberbullying, online harassment, identity theft, and financial scams. People with limited digital literacy or those unaware of online safety protocols are especially at risk. Technology also facilitates the spread of misinformation and exploitation, such as through online grooming or the non-consensual sharing of private content. As our reliance on digital tools grows, so does the importance of cybersecurity measures and education to protect against these modern threats.

### **2.3 Risks of Victimization**

Understanding the risk of victimization is a fundamental concern in the field of criminology and victimology. Victimization refers to the process through which individuals become targets of criminal acts and the likelihood or risk of such victimization varies depending on multiple personal, environmental and social factors.

Cohen and Felson's Routine Activity Theory (1979) is a major victimization explanation. Cohen and Felson's Routine Activity Theory (1979) is widely regarded as an explanation for crime and how certain populations grow more prone to victimization. The idea states that a crime requires a motivated criminal, an appropriate target, and the lack of adequate supervision in time and place.

This model emphasizes that criminal victimization is not merely a function of individual behavior or offender characteristics, but rather a consequence of daily routines that inadvertently expose individuals to risk. The theory posits that people's routine activities such as commuting, working, shopping, or socializing can increase their exposure to motivated offenders. For instance, individuals who frequently go out at night, use public transportation, or walk alone in poorly lit or unsupervised areas are more likely to find themselves in high-risk situations (Cohen & Felson, 1979). These patterns do not cause crime directly but increase the opportunity structure for victimization to occur.

One of the key risk factors within this framework is being a suitable target, which may include characteristics such as being alone, carrying valuable items (e.g.,

phones, jewelry), or appearing vulnerable. Similarly, lack of guardianship which can be formal (like police patrols or security systems) or informal (such as friends, neighbors, or even a busy environment) is another crucial factor. The absence of these protective factors enhances the likelihood that a motivated offender will act without fear of being caught (Felson, 2002).

Unlike other criminological theories that focus on the social or psychological background of offenders, Routine Activity Theory treats offender motivation as constant and instead concentrates on how changes in social structure and lifestyle increase opportunities for crime. For example, urbanization, technological advances, and more people spending time outside the home have contributed to greater opportunities for crime in modern societies (Clarke & Felson, 1993). Thus, the risk of victimization is closely tied to how, when, and where individuals conduct their daily activities.

## **2.4 Theoretical Perspectives on Fear of Crime**

Hale (1996) identifies three theoretical perspectives: vulnerability, victimization experience, and ecology.

### **(i) Vulnerability Perspective**

Criminologists focus more on vulnerability since vulnerability affects crime fear as much as victimization, if not more. A vulnerability perspective hypothesis explains why people with various socioeconomic statuses dread crime differently. From this perspective, criminal perspectives of various ethnic groups, socioeconomic classes, and sexes explain variations. Vulnerability theory suggests that criminal fear is linked to vulnerability. Individuals' opinions regarding criminal vulnerability vary. Skogan and Maxfield stress that fear of crime is influenced by physical vulnerability.

A major consequence of physical vulnerability in terms of criminal fear is taking precautions. Women and the elderly, who are physically vulnerable, are likely to take measures against certain crimes (Skogan and Maxfield 1981:69). Women and the elderly dread crime due of physical vulnerability. Due of their physical fragility, women and the elderly may dread such crimes. However, gender differences help us understand why women dread crime more. Due to the potential of sexual victimization, Warr (1985) found that women dread physical crimes more. He cited sexual abuse as a major cause of women's criminal dread.

Thus, sexual assault shapes women's fear of crime and how they see other crimes. Sexual offenses directly and indirectly impair women's sense of safety and perception of criminal risks. Ferraro noted that women are exposed to sexual offenses more than males, which misleads them about crime. Men and women dread non-violent crimes similarly, while women fear rape and sexual abuse more (Ferraro 1996). Another physically susceptible category is the elderly. Although numerous research have examined the relationship between women's victimization and fear of crime, older people's dread is generally low. The social significance of the elderly makes generalization problematic, especially regarding age and crime dread. The vulnerability viewpoint suggests that women and the elderly feel vulnerable. Many experts believe vulnerability explains why certain populations dread crime more while there being less victims. 1990 (Killias).

## **(ii) Victimization Perspective**

The victimization viewpoint holds that crime victims are more afraid than non-victims. Victims reported increased criminal fear, according to several studies. Other study observed that the kind of criminal victimization (violent or property) altered the victimization-fear of crime association (Miethe & Lee, 1984). Studies also show that non-victims dread crime more than victims (Chiricos et al., 1997; Eschholz, et al., 2003).

Direct and indirect victimization affected crime fear in Tseloni and Zarafonitou (2008) study. Direct victimization involves being personally exposed to the crime, whereas indirect victimization means someone you know was exposed. Research evaluated the fear of crime and perceived high risk of victimization of direct, indirect, and non-victims at home and stepping out. Tseloni and Zarafonitou (2008) found a link between crime fear and direct victimization.

Hale (1996) also links media consumption to victimization. Vicarious victimization includes watching violent TV. Several studies found that watching crime-related shows or TV violence increased fear of crime, even if they did not necessarily refer to the indirect victimization impact of media violence.

## **(iii) Ecological Perspective**

The ecological perspective in criminology focuses on how environmental and spatial factors influence individuals' perceptions of safety and their fear of crime. It

proposes that people assess the risk of victimization not only based on personal experiences but also on the observable features of their surroundings. Physical signs of disorder such as vandalism, abandoned buildings, broken streetlights, and poorly maintained infrastructure are often interpreted as indicators of social neglect or increased criminal activity (Wilson & Kelling, 1982). These cues contribute to a psychological sense of danger, causing residents and visitors alike to feel unsafe, even when crime rates may not be objectively high.

Beyond the physical environment, the ecological perspective highlights the importance of social organization and community dynamics. Neighborhoods with strong social ties, collective efficacy and active community engagement tend to experience lower levels of fear among residents. In contrast, areas marked by social disorganization where there is limited trust among neighbors, low participation in local activities, and weak informal social controls are more likely to foster anxiety and perceived vulnerability (Sampson, Raudenbush, & Earls, 1997). When individuals sense that their community lacks cohesion or the capacity to respond to threats, their perception of risk intensifies, even in the absence of actual victimization.

Additionally, urban planning and public space management play a pivotal role in shaping ecological conditions that either heighten or alleviate fear of crime. Well-lit streets, open sightlines, visible pedestrian activity and maintained green spaces promote feelings of safety by encouraging natural surveillance and a sense of ownership over public areas (Skokkpgan, 1990). The ecological perspective thus provides a holistic understanding of how environment design, neighborhood stability and collective social functioning interact to influence perceived risk and fear of crime.

## **2.5 Victimization Prevention Measures**

Victimization prevention measures aim to reduce the likelihood of individuals or groups becoming victims of crime. These methods are grounded in criminological theories and practical interventions and vary according to the context of victimization, such as personal safety, property crimes, or cyber threats. Understanding these measures is essential for designing effective crime prevention policies and interventions (Lab, 2016).

### 2.4.1 Situational Crime Prevention (SCP)

Situational Crime Prevention focuses on modifying the physical environment to decrease opportunities for crime. Developed by Clarke (1997), this approach involves increasing the perceived risks, effort, and reducing the rewards for committing crimes. Common strategies include:

- **Installing CCTV cameras:** Installing closed-circuit television systems to oversee public and private spaces. The presence of visible cameras not only deters potential offenders but also assists in evidence collection and crime investigation.
- **Improving lighting in public areas:** Enhancing lighting in outdoor and public areas, especially at night, improves visibility and increases the perceived risk of being caught, which can reduce criminal activity.
- **Using burglar alarms and secure locks:** Secure locks such as deadbolts or electronic locking systems, make unauthorized entry more difficult, while burglar alarms provide immediate alerts in case of intrusion. Restricting entry to buildings or areas using tools like key cards, biometric scanners or physical barriers helps prevent unauthorized access and lowers the chances of theft or vandalism.
- **Target hardening:** The installation of secure locks, burglar alarms, reinforced doors and windows, metal detectors, and security grilles include target hardening. These measures create physical barriers or detection systems that discourage offenders by making access more difficult and increasing the risk of being caught.

### 2.4.2 Legislative and Legal Measures

Legislative and legal strategies are fundamental in crime prevention, as they provide a structured framework of laws, regulations, and consequences that deter criminal behavior (Lynch, 1997). These measures function to uphold justice, protect public safety, and guide the conduct of individuals and institutions. Key components include:

- **Criminal Justice System:** A well-functioning criminal justice system plays a central role in deterring crime by ensuring that laws are enforced fairly and consistently. This involves prompt and thorough police

investigations, efficient prosecution, just legal proceedings, and appropriate sentencing that reflect the severity of offenses.

- **Gun Control Law:** Enacting comprehensive gun control laws helps reduce gun-related crimes. These laws typically include background checks, mandatory waiting periods, limitations on specific types of firearms, and secure storage regulations—all aimed at preventing unauthorized or irresponsible gun use.
- **Crime Reporting and Information Sharing:** Encouraging citizens to report criminal activity and providing accessible, secure mechanisms for doing so allows law enforcement to gather critical information. This supports the identification of crime trends, enables timely interventions, and strengthens community-police cooperation.
- **Legislation against Organized Crime:** Specific laws targeting organized criminal enterprises such as drug trafficking, human smuggling, cybercrime, and money laundering are vital in dismantling these networks and minimizing their social and economic damage.
- **Victim Support and Legal Aid Services:** Legal frameworks also include provisions to protect and support crime victims. Services such as counseling, legal guidance, and financial assistance are crucial in helping victims recover and in encouraging the reporting of crimes, which can ultimately aid in broader crime prevention efforts.

### **2.4.3 Social Development Programs**

Social development programs are preventative strategies aimed at reducing crime and victimization by addressing the social and economic root causes of criminal behavior. According to Waller (2006), effective crime prevention must prioritize social investment in areas such as early childhood education, family support services, school retention initiatives, and job training programs.

- **Early Childhood Development and Parenting Programs:** Includes structured interventions that teach parenting skills, promote bonding and provide cognitive and emotional support in early years.

- **School Retention and Anti-Bullying Programs:** Initiatives aimed at keeping youth engaged in education while promoting a positive school climate and reducing victimization among students.
- **Job Readiness and Employment Training for At-Risk Youth:** Helps marginalized young people gain vocational skills, build employment pathways and reduce criminal involvement due to poverty or unemployment.
- **Victim Support and Empowerment Services:** Programs that provide counseling, legal aid, and financial support to crime victims, helping prevent re-victimization and fostering community trust.

## 2.6 Reviews on Previous Studies

Truman (2007) investigated sociodemographic characteristics, victimization, precautionary behaviors, lifestyle activities, alcohol and drug use, media usage, fear of crime, perceived risk of victimization, and safety perception among college students. University of Central Florida students completed the surveys in autumn 2006. Females reported considerably higher mean fear ratings for all crimes except property crimes and higher perceived risk of victimization scores for most crimes.

Crime fear did not predict preventive actions. However, individuals with higher perceived risk used more precautions. Media exposure merely increased worry, danger, and insecurity. Gökulu (2011) examined Middle East Technical University students' perceptions of crime risk and fear of crime in “Perceived Risk of Victimization and Fear of Crime: A Case Study of METU Students”. The study examined elements including gender, age, victimization experience, environmental disorder, and limited behaviors at METU campus and Kızılay city center. The result showed that female students report higher fear of crime, direct victimization significantly impacts fear levels more than indirect victimization, and fear is higher in less protected areas like Kızılay compared to the campus. The environmental and social perceptions strongly influence students' emotional and behavioral responses to crime threats.

Andreescu (2014) examined “Perceived Risk of Victimization in Estonia and Lithuania” to study compares perceived risk of victimization in Estonia and Lithuania. The data used from the European Social Survey (2012) to examine how individual-level factors such as gender, prior victimization, disability, economic hardship, and social

trust. Despite lower actual victimization rates, Lithuanians report higher fear of crime than Estonians, suggesting that societal context and perceived vulnerability strongly influence fear. Key findings showed that women, urban residents, and socially or economically marginalized individuals feel less safe. Trust in the police decreases fear in Estonia but not in Lithuania, indicating country-specific dynamics.

Kim (2023) investigated University of Louisville how media usage, particularly social media, affects college students' perceived risk of victimization and fear of crime. The study surveyed 662 U.S. college students to evaluate fear's emotional and cognitive elements using Ferraro's risk interpretation model and Gerbner's cultivation theory. Results showed that social media intake affects fear more than conventional media. Gender, age, victimization experience, race, and police trust also affect safety.

The study by Aung Myint Myat (2024), titled “A Study on Benefits of Crime Prevention in Nay Pyi Taw (Case Study: Zabuthiri Township)” examined the benefits of crime prevention in Zabuthiri Township. It investigated residents’ knowledge, awareness and perceptions of crime prevention efforts. Using a descriptive research method, primary data was collected from 400 households in Zabuthiri township through structured questionnaires. The result revealed that most respondents have good awareness and a positive attitude towards crime prevention. It suggested educational campaigns, community engagement, digital information dissemination, and law enforcement collaboration. The study highlighted the effectiveness of proactive, community-based crime prevention strategies in promoting safety and reducing criminal activities in urban areas like Zabuthiri Township.

## **CHAPTER III**

### **OVERVIEW OF VICTIMIZATION RISK IN MYANAMR**

#### **3.1 Rules, Regulations and Policies of Crime in Myanmar**

Myanmar's framework of rules and regulations concerning crime is fundamentally structured around two principal pieces of legislation: the Penal Code and the Criminal Procedure Code. These core laws, largely remnants of the British colonial era and closely mirroring their Indian counterparts, define criminal offenses and outline the procedures for their enforcement. Complementing these are various special laws enacted over time to address specific types of crimes and evolving societal concerns, reflecting a continuous, albeit sometimes contentious, adaptation of the legal system.

The Myanmar Penal Code, during British colonial rule, is the country's primary criminal code. It is largely based on the Indian Penal Code and is divided into 23 chapters. This extensive code is organized into distinct chapters that comprehensively cover crimes against persons, such as murder, culpable homicide, assault, and kidnapping; offenses against property, including theft, robbery, fraud, and criminal breach of trust and crimes against the state, like sedition and offenses related to public servants. The Penal Code also delineates crucial general principles of criminal liability, such as common intention, abetment, and criminal conspiracy.

Working in tandem with the Penal Code, the Criminal Procedure Code, dating from 1898, governs the procedural aspects of criminal justice in Myanmar. The Code is a comprehensive law that outlines the procedure for administering criminal law in Pakistan and other countries that have adopted it. The code is divided into several parts covering preliminary provisions, the constitution and powers of criminal courts, general provisions, prevention of offenses, police investigations and trial proceedings.

Beyond these two foundational codes, Myanmar has enacted a series of special laws to address particular types of criminal activity that require more focused legal attention and, often, more stringent penalties. The Child Law outlines the formation of a National Committee on the Rights of the Child and its duties, aiming to protect and safeguard the rights of children. The law also specifies categories of children in need

of protection and care. The Narcotic Drugs and Psychotropic Substances Law targets drug production, trafficking, and abuse, imposing severe penalties in line with international efforts to control illicit substances. Myanmar enacted The Anti-Trafficking in Persons Law to address trafficking in persons, especially women and children. It provides for prevention and suppression of trafficking, protection and rehabilitation of victims and severe penalties for traffickers. Similarly, the Counter-Terrorism Law defines acts of terrorism and outlines measures for their prevention and suppression, carrying severe penalties for convicted offenders. Other specialized legislation includes laws addressing money laundering and nascent cybercrimes. These special laws allow the legal system to respond to complex, evolving criminal challenges, often reflecting international standards and conventions, while supplementing the broader provisions of the Penal Code and the procedural guidelines of the Criminal Procedure Code.

The following table (3.1) shows the key aspects of rules and regulations related to crime in Myanmar:

**Table (3.1) Law Related to Crime in Myanmar**

<b>Law</b>	<b>Year Enacted</b>	<b>Key Purpose and Scope</b>
The Penal Code of Myanmar	1861	Myanmar's primary criminal code, largely based on the Indian Penal Code. It defines various criminal offenses against the state, public tranquility, human body, property, and other matters, prescribing punishments for a wide range of offenses.
Code of Criminal Procedure	1898	Outlines procedures for arrest, investigation, trial, and sentencing. Ensures lawful processing of criminal cases.
The Child Law	1993	Protects child rights and establishes a National Committee on the Rights of the Child. Focuses on welfare and protection.
Narcotic Drugs and Psychotropic Substances Law	1993	Regulates and controls narcotic and psychotropic drugs to combat drug abuse and trafficking.

<b>Law</b>	<b>Year Enacted</b>	<b>Key Purpose and Scope</b>
Anti-Trafficking in Persons Law	2005	Aims to combat human trafficking, especially of women and children, with provisions for victim protection and trafficker punishment.
Electronic Transactions Law	2004	Establishes the legal basis for electronic communications and combats cybercrime. Facilitates digital commerce and governance.
Counter-Terrorism Law	2014	Prevent terrorism within Myanmar and protect national security, public safety, and order by defining and criminalizing terrorism-related activities.

Source: Myanmar Law Library (2024)

In terms of policies and strategies for crime prevention and justice administration, Myanmar has theoretically engaged in efforts such as the National Crime Prevention Strategy (NCPS), launched in 2019. This strategy aimed for a multi-sectoral approach to crime prevention, emphasizing addressing root causes through social development, community-based initiatives and rehabilitation programs.

### **3.2 Profile of Myanmar Police Force**

As an autonomous agency of the Ministry of Home Affairs, Myanmar Police Force (People's Police Force) was founded in 1964. In the 1970s and 1980s, the Myanmar Police Force underwent structural reforms to improve operational efficiency. This period attempts to upgrade police equipment, infrastructure and improvement in training initiatives. Despite these developments, the force continued to face difficulties, primarily due to resource limitations and ongoing political unrest. In the 1990s and early 2000s, there was a renewed emphasis on professionalizing the police force. Training was further strengthened, with a particular focus on criminal investigations and legal procedures. Additionally, the police force began to take on a more active role in combating drug-related crimes, in response to the increasing prevalence of narcotics trafficking in the region.

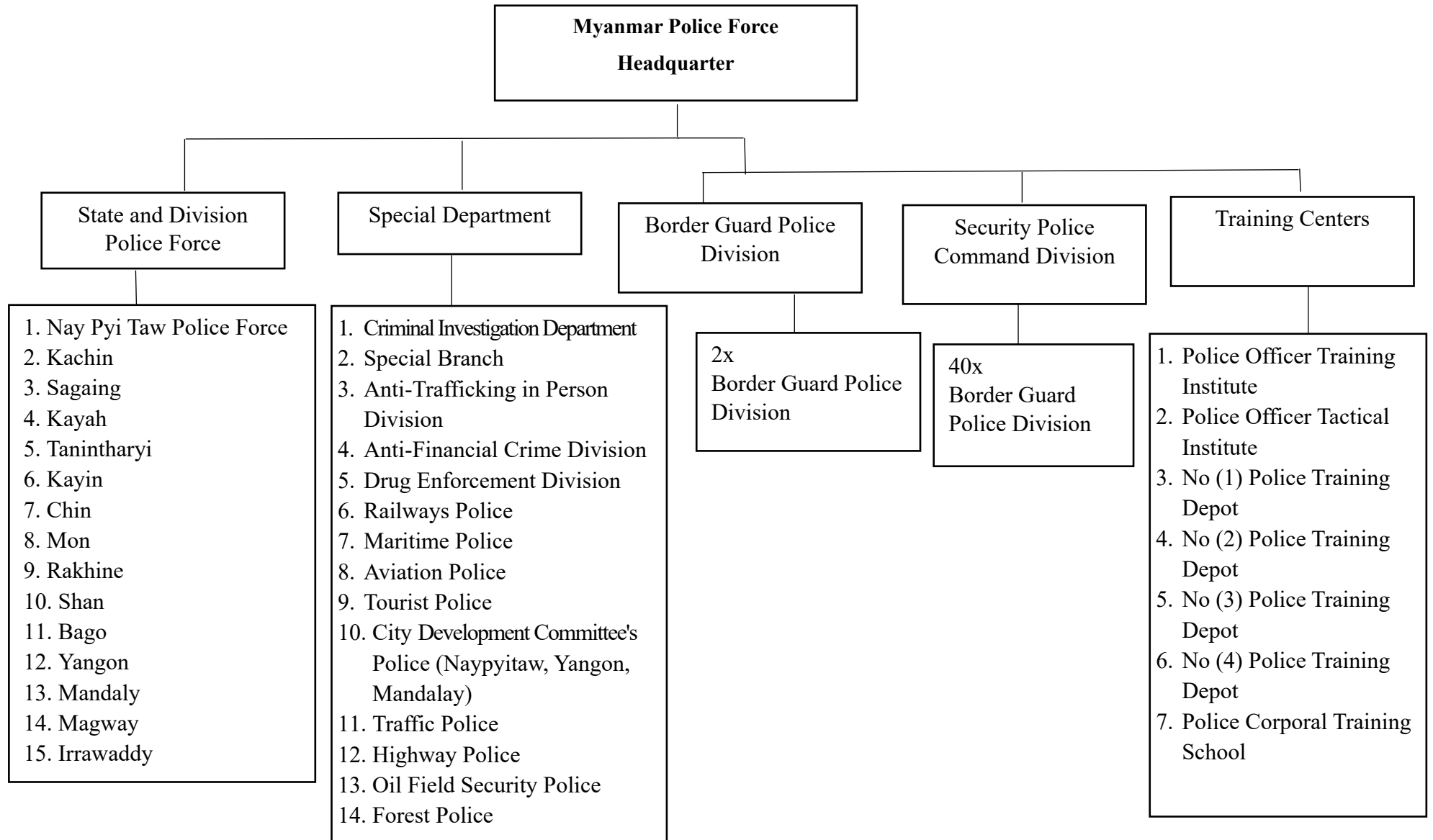
In 2025, the Myanmar Police Force is under the Ministry of Home Affairs, and the Chief of Police controls the whole force. Myanmar Police Force has Headquarters, Security Police Command Division, Border Guard Police Division, Special Department, State and Division Police, and Training Centers. The Chief of Police runs the Myanmar Police Force with the help of Deputy Chief of Police, Chief of Police General Staff, Police Adjutant General, Police Quarter Master General, Head of Division against Transnational Crime, and Head of Police Training Division, all of whom are Police Brigadier Generals. Four Security Police Command Divisions report directly to Headquarters. Police Brigadier Generals oversee these divisions in Yangon, Mandalay, and Rakhine States. A Brigadier General leads Border Guard Police Division, created on March 10, 2014.

Myanmar Police Force has fourteen Special Departments led by Brigadier Generals and Police Colonels. Special Department includes Criminal Department, Special Branch, Anti-Trafficking in Person Division, Anti-Financial Crime Division, Drug Enforcement Division, Railways Police, Maritime Police, Aviation Police, Tourist Police, City Development Committee's Police (Naypyitaw, Yangon, Mandalay), Traffic Police, Highway Police, Oil Field Security Police, and Forest

Police Brigadier Generals and Police Colonels command 15 state and regional police forces, including Pyidaungsu Region Napyitaw Police Force. Civil administration departments choose their responsibilities. There is one Police Officer Training Institute of Myanmar Police Force (POTI) in Zeebingyi, one Police Officer Tactical Training Institute (POTTI) in Mandalay, four Police Basic Training Depots, and a Police Corporal Training School.

The Myanmar Police Force emphasis on fostering positive relations with the community, understanding that public cooperation is essential for maintaining peace and security. In addition to this, the police also collect intelligence related to political, economic, religious, and criminal matters to enhance their ability to perform their responsibilities effectively. The organizational structure of the Myanmar Police Force is illustrated in Figure (3.1).

**Figure (3.1) Organization Chart of Myanmar Police Force**



Operating under the Ministry of Home Affairs, the Myanmar Police Force (MPF) plays a central role in the prevention, detection and control of crime throughout the country. Within its organizational structure, the Criminal Investigation Department (CID) is the primary division responsible for investigating serious criminal offenses such as homicide, robbery, drug trafficking, financial crimes and organized criminal activities. The CID works closely with local police units and other branches of the MPF to conduct thorough investigations, gather evidence, identify suspects, and support the judicial process.

The CID also contributes to crime prevention by collecting and analyzing intelligence related to criminal networks, patterns, and emerging threats. By integrating forensic science, surveillance technology, and criminal databases, the CID supports proactive policing strategies aimed at reducing crime opportunities and deterring offenders.

The CID provides assistance to local police stations in the investigation of crimes, particularly in revealing clues and evidence at the crime scene. The department cooperates with other police departments and agencies to ensure effective crime prevention and investigation. Thus, the CID serves as a specialized investigative unit within the Myanmar Police Force, playing a crucial role in maintaining law and order by investigating and resolving serious crimes.

### **3.3 Victimization risk in Myanmar**

In Myanmar, the risk of victimization is influenced by a complex combination of socio-economic, political and legal factors. High poverty rates and significant income inequality increase the vulnerability of certain populations to crime, particularly theft, robbery, drug and human trafficking, corruption and organized crime. Many communities lack adequate security infrastructure, such as proper street lighting and police presence, which increases their exposure to criminal acts (UNODC, 2020).

Theft and robbery are common crimes in Myanmar, mainly caused by poverty and economic inequality. Drug trafficking is also a major problem. Myanmar is an important producer and transporter of illegal drugs, especially opium. Because the country is located near the Golden Triangle, it is more exposed to drug-related crimes. Human trafficking is another serious issue. Corruption is widespread in Myanmar and

affects many parts of society, including the police. Criminal gangs are involved in drug and human trafficking, as well as smuggling.

Gender-based violence is a critical component of victimization risk in Myanmar, particularly affecting women and girls. Poor people especially women and children from areas affected by conflict or poverty, are often forced into labor or sexual exploitation. In both urban and rural areas, domestic violence, sexual assault and workplace harassment remain underreported due to stigma, fear of retaliation and limited legal protections (UN Women, 2022).

Young people in Myanmar are particularly at risk of both becoming victims and perpetrators of crime, especially in urban areas where unemployment and lack of access to quality education are widespread. Many youths living in poor neighborhoods face peer pressure, gang influence or are drawn into criminal networks due to limited life prospects. At the same time, students, especially females, are vulnerable to harassment and exploitation, including in schools. The education system lacks comprehensive safety protocols or counseling services to protect students and raise awareness about their rights and legal protections (UNESCO, 2021).

Weak and ineffective law enforcement makes the situation worse. They take advantage of the country's weak government systems to carry out these illegal activities. The lack of strong and effective law enforcement in Myanmar contributes significantly to high victimization risk. Police forces are underfunded and often lack the necessary resources to prevent and investigate crime. In many cases, citizens do not report crimes because they believe the police will not act or may even demand bribes in exchange for assistance. This has created a cycle of impunity in which criminals act without fear of consequences and victims are left unprotected. (Transparency International, 2021).

**Table (3.2) The selected crimes by type of offence in Myanmar from 2017 to 2022**

<b>Type of Crime</b>	<b>2017</b>	<b>2018</b>	<b>2019</b>	<b>2020</b>	<b>2021</b>	<b>2022</b>
Murder	1,397	1,446	1,481	1,511	2,421	2,225
Dacoity	19	18	26	13	99	82
Robbery	220	204	127	112	129	320
Burglary	23	38	30	22	8	31
Rape	1,405	1,583	1,261	1,274	612	697
Theft	6,115	6,838	6,142	4,716	3,116	3,724
Forgery and Coinage	34	34	18	13	6	84
Offences under the People's Property Protection Act	1,646	1,438	443	311	6,404	1,102
Narcotic Offences	9,525	12,902	12,944	13,875	660	6,930
Gambling	3,211	2,994	2,839	2,557	24	1,444
Trafficking in Person (TIP)	203	206	239	111	22	25
<b>Total</b>	<b>23,798</b>	<b>27,701</b>	<b>25,550</b>	<b>24,515</b>	<b>13,501</b>	<b>16,664</b>

Source: Myanmar Police Force

According to the Table (3.1), Myanmar experienced fluctuating crime patterns across several offence categories between 2017 and 2022. The number of murder cases showed a steady increase from 1,397 in 2017 to a peak of 2,421 in 2021, before slightly declining to 2,225 in 2022. Dacoity generally remained low but saw a notable increase in 2021 (99 cases) and 2022 (82 cases) compared to previous year in 2020. Robbery

cases gradually decreased from 220 in 2017 to 112 in 2020, but then reversed course, rising to 129 in 2021 and surging to 320 in 2022. A similar trend is observed in burglary, which remained very low throughout the period, dipping to just 8 cases in 2021 before slightly increasing to 31 in 2022. Rape cases were relatively high before 2020, reaching 1,583 cases in 2018, but then dropped dramatically to 612 in 2021. There was a modest rebound in 2022 with 697 cases. Theft was consistently the most reported crime, with over 6,000 cases annually until 2019, but the number dropped significantly during the pandemic and post-coup years, reaching a low of 3,116 in 2021 before slightly rising to 3,724 in 2022. Forgery and Coinage remained very low until a sharp increase in 2022 to 84 cases. Offences under the People’s Property Protection Act showed a dramatic spike in 2021 (6,404 cases) from much lower numbers in previous years, before falling to 1,102 in 2022. Narcotic Offences were consistently high from 2017 to 2020 (over 9,000 cases annually), peaking at 13,875 in 2020. However, they plummeted to a very low 660 in 2021 before rising again to 6,930 in 2022. Gambling offences were common from 2017 to 2020, with over 2,500 cases per year, but drastically dropped to just 24 in 2021. However, by 2022, they rose again to 1,444 cases. Similarly, human trafficking cases (Trafficking in Persons - TIP) saw a decline from over 200 cases annually (2017-2019) to just 22 in 2021, and slightly up to 25 in 2022, which may reflect changes in enforcement or reporting capacity rather than an actual reduction in incidents.

**Table (3.3) The selected crimes rate by type of offence in Myanmar from 2017 to 2022 (per 100,000 inhabitants)**

Type of Crime	2017	2018	2019	2020	2021	2022
Murder	2.62	2.70	2.75	2.77	4.42	3.99
Dacoity	0.04	0.03	0.05	0.02	0.18	0.15
Robbery	0.41	0.38	0.24	0.21	0.24	0.57
Burglary	0.04	0.07	0.06	0.04	0.01	0.06
Rape	2.63	2.95	2.34	2.33	1.12	1.25
Theft	11.45	12.75	11.40	8.64	5.68	6.68
Forgery and Coinage	0.06	0.06	0.03	0.02	0.01	0.15

Type of Crime	2017	2018	2019	2020	2021	2022
Offences under the People's Property Protection Act	3.08	2.68	0.82	0.57	11.68	1.98
Narcotic Offences	17.84	24.06	24.03	25.42	1.20	12.44
Gambling	6.01	5.58	5.27	4.68	0.04	2.59
Trafficking in Person (TIP)	0.38	0.38	0.44	0.20	0.04	0.04

Source: Myanmar Police Force

According to table (3.2), in 2022, the murder rate in Myanmar was 3.99 per 100,000 population, a slight decline from 2021's peak of 4.42 but still significantly higher than pre-2021 levels, reflecting ongoing instability and violence. Dacoity, though relatively low in earlier years, also rose in 2021 and 2022. Robbery experienced a noticeable surge, reaching 0.57, more than doubling the rate from the previous year and marking the highest robbery rate in the six-year span. Burglary remained low but showed a small increase to 0.06, up from 0.01 in 2021, indicating a slight uptick in residential or property-related crimes. Rape cases had a modest rise, with a rate of 1.25, compared to 1.12 in 2021. Theft, the most prevalent crime, also saw a moderate increase, rising to 6.68 from 5.68 in 2021, indicating a potential return to pre-pandemic levels of property crime. Forgery and Coinage declined in 2021, but some began to rise again in 2022. A sharp rise in offences under the People's Property Protection Act in 2021 (11.68) may be associated with the political crackdown on protestors. Narcotic offences surged until 2020 (25.42), but dropped drastically in 2021 (1.20), followed by a partial rise in 2022 (12.44). Gambling offences, which had nearly disappeared in 2021 (0.04), rose sharply to 2.59, possibly due to the resumption of law enforcement activities or increased public reporting. Lastly, human trafficking remained extremely low, with a rate of just 0.04, suggesting either a significant reduction or continued underreporting, especially in the context of weakened institutions.

### 3.4 Types of Victimization and Crime in Yangon

Yangon experiences a wide range of crimes and forms of victimization, which have been significantly influenced by the country's political instability and economic hardship. The following is a comprehensive overview of the different types of victimization and crimes that occur in Yangon:

- (i) **Personal and Physical Victimization:** This form of victimization includes physical assault, robbery and threats of violence, often occurring in public places such as streets, markets or transport terminals. Victims are typically targeted for their perceived vulnerability, such as being alone, elderly or appearing affluent.
- (ii) **Sexual Victimization:** Sexual harassment and assault represent a significant, particularly happen among women, girls and gender minorities. Incidents often occur in crowded buses, public spaces, schools and workplaces, with victims facing social stigma and limited legal protection.
- (iii) **Domestic Violence:** Domestic violence is a pervasive yet often invisible form of victimization in Yangon. Women and children are frequently victims of physical, emotional and psychological abuse within the household. Cultural norms and weak enforcement of legal protections hinder reporting and support mechanisms.
- (iv) **Property Victimization:** Property crimes such as theft and burglary are among the most common forms of victimization in urban Yangon. These offenses typically occur in crowded public spaces, markets, buses and residential areas with limited security. Victims may experience financial loss, emotional distress and feelings of insecurity, especially when incidents occur within or near their homes.
- (v) **Economic and Fraud-Related Victimization:** As the digital economy grows, individuals increasingly face victimization through scams, cyber fraud and financial deception. Victims often include young internet users, online shoppers and informal workers who lack legal awareness or digital literacy.
- (vi) **Child Victimization:** Children in Yangon are vulnerable to neglect, abuse, bullying, trafficking and child labor, especially in poor neighborhoods and informal settlements. Many are subjected to long-term harm due to limited access to protective services or education.

**(vii) Drug Trafficking and Use:** As a major urban center, Yangon is a key transit and distribution point for illicit drugs like opium and heroin. This leads to increased drug-related crime, addiction issues within the city and associated violence and money laundering activities.

**(viii) Human Trafficking Victimization:** Yangon functions as a key transit and recruitment area for human trafficking, including trafficking for forced labor, sexual exploitation and child exploitation. Victims often come from rural areas and ethnic minority regions.

The following table (3.3) shows the selected crimes by type of offence in Yangon region and has significant variation over the three-year period from 2020 to 2022, reflecting changes in social, political, and economic conditions.

**Table (3.4) The selected crimes by type of offence in Yangon**

Types of Crime	2020	2021	2022
Murder	171	445	448
Dacoity	-	20	22
Robbery	11	39	132
Burglary	1	5	13
Rape	155	101	128
Theft	677	673	1120
Forgery and Coinage	4	-	14
Offences under the People's Property Protection Act	22	820	196
Narcotic Offences	2,030	112	753
Gambling	807	5	391
Trafficking in person (TIP)	30	5	8
<b>Total</b>	<b>3908</b>	<b>2225</b>	<b>3225</b>

Source: Myanmar Police Force

The data presented in table 3.3 highlights significant fluctuations in various types of crimes reported in Yangon over the three-year period from 2020 to 2022. In crimes by type of offence, theft is the most common crime, with cases increasing from 677 in 2020 to 1,120 in 2022. Burglary is one of the lowest reported crime types in Yangon compared to others like theft, narcotic offences or robbery.

In Yangon region, Hlaing Thar Yar township is identified as the township with the highest incidence of victimization, particularly related to a large population of internal migrants, factory workers, and squatter areas. This combination of overpopulation and urban poverty has made Hlaing Thar Yar as a hotspot for various forms of crime. The township is widely recognized as one of the most affected areas, primarily due to high levels of labor exploitation, workplace harassment, theft and gender-based violence. Hundreds of factories where workers especially women experience unsafe conditions, wage theft, and verbal or sexual abuse. In current situation, robbery cases, theft, assaults in the street, rapes, domestic violence, child abuse and other cases are happening in the everyday life within the wards of the township.

## **CHAPTER IV**

### **SURVEY ANALYSIS**

#### **4.1 Survey Profile**

Hlaing Thar Yar Township is in western Yangon. One of the largest and most populous townships in the country. It has 20 wards and nine village tracts and borders Htantabin Township in the north and west, Insein Township, Mayangon Township, Hlaing Township (across the Yangon River) in the east, and Twante Township in the south. Four bridges - Aung Zeya Bridge, Bayinnaung Bridge 1 and 2, Shwe Pyi Thar Bridge - connect Hlaing Thar Yar and other Yangon neighborhoods over the Yangon and Hlaing rivers. Over the Pan Hlaing River, the Pan Hlaing Bridge links Hlaing Thar yar and Twenty Townships. Hlaing Thar Yar began in 1980s. East Hlaing Thar Yar Township has nine wards, six industrial zones, and five village groups covering 13.97 sq. miles. On 12.24 square miles, West Hlaing Thar Yar Township has eleven wards, eight industrial zones, and four village groups. Hlaing Thar Yar Township has 67.4 km<sup>2</sup> (26.01 sq mi). According to the 2014 census, the municipality has over 700,000 residents. After Cyclone Nargis, many rural people relocated to Hlaing Thar Yar, which flourished swiftly. The General Administration Department predicts 633,229 Township inhabitants by 2023. Population forecasts for this area in 30 years at 1% increase are 1,315,000. As one of the largest and more urbanized areas in Yangon, crime rates are contributing to a significant rise. Many residents are low-wage workers, making them easy targets for theft, robbery, and exploitation (like debt-related intimidation or human trafficking). Many migrant workers, especially women, lack support networks, making them isolated and prone to domestic, sexual, or other forms of violence. Three wards in Hlaing Thar Yar township were chosen as the research region.

**Table (4.1) Number of Households and Population of Hlaing Thar Yar Township  
(East & West)**

Sr. No.	Ward	No. of Households	Population		
			Male	Female	Total
	Ward total	132,624	241573	192616	434189
1.	No (1) W	8277	13203	15335	28538
2.	No (2) W	3565	5476	6287	11763
3.	No (3) W	4839	8015	8137	16152
4.	No (4) W	1063	2447	3048	5495
5.	No (5) W	10281	13233	17062	30295
6.	No (6) W	13809	16293	22445	38738
7.	No (7) W	11585	16903	20156	37059
8.	No (8) W	1680	3176	3779	6955
9.	No (9) W	6599	8519	14191	22710
10.	No (10) W	4898	6342	7385	13727
11.	No (11) W	5724	10477	12531	23008
12.	No (12) W	4580	7629	9191	16820
13.	No (13) W	4968	6442	8099	14541
14.	No (14) W	6482	8535	10187	18722
15.	No (15) W	6432	9726	12397	22123
16.	No (16) W	7268	10744	13864	24608
17.	No (17) W	605	1616	1461	3077
18.	No (18) W	6544	9716	13184	22900
19.	No (19) W	8320	14623	18685	33308
20.	No (20) W	15105	19501	24149	43650

Source: General Administration Department (Hlaing Thar Yar, 2024)

## 4.2 Survey Design

The structured questionnaire used in this study was designed to support the research objective of examining the residents on perceived risk of victimization in Hlaing Thar Yar Township. It consisted of five main parts with demographic characteristics of respondents, respondents' perceptions about victimization risks, environmental features, perceived risk of victimization and precautionary measures against victimization.

The first part focused on the demographic characteristics of the respondents, including gender, age, marital status, education level, occupation and duration of residence. The second part explore both the direct and indirect experience of respondents about victimization including theft, robbery, physical attacked with or without weapon and sexual abuse. In the third part, the environmental features related to Hlaing Thar Yar township measure the physical, environmental and social incivility. Perceived risk of victimization measure how individuals feel about their likelihood of being victimized. The final part, precautionary measures against victimization, accesses precautionary behaviors adopted by individuals and the ways to reduce becoming a victim of crime.

Two-stage sampling method is used in this study. At the first stage, three wards with the highest crime rates due to high population density, squatters and migrant settlements are chosen from Hlaing Thar Yar Township. There are 18,685 households in three wards. A simple random sampling method is applied to select 377 from 18,685 households in three selected wards at the second stage. To determine the appropriate sample size for the survey, the Yamane (1967) formula was applied.

$$\text{Sample size} \quad n = \frac{N}{1+N(e)^2}$$

$$\text{Population Size} \quad N = 18685$$

$$\text{The margin of error} \quad e = 0.05$$

$$\begin{aligned} \text{Sample size} \quad n &= \frac{18685}{1+18685(0.05)^2} \\ &= \frac{18685}{47.7125} \\ &= 392 \end{aligned}$$

$$\text{Total Sample Size} = 377$$

The sample size for selected ward No (2), (3) and (5) are shown in the table (4.2).

**Table (4.2) Sample of the survey area**

<b>Sr. No.</b>	<b>Ward</b>	<b>No. of Households</b>	<b>Number of Households in Selected Wards</b>	<b>Number of Selected Households</b>
1.	No (1) W	8277		
2.	No (2) W	3565	3565	72
3.	No (3) W	4839	4839	98
4.	No (4) W	1063		
5.	No (5) W	10281	10281	207
6.	No (6) W	13809		
7.	No (7) W	11585		
8.	No (8) W	1680		
9.	No (9) W	6599		
10.	No (10) W	4898		
11.	No (11) W	5724		
12.	No (12) W	4580		
13.	No (13) W	4968		
14.	No (14) W	6482		
15.	No (15) W	6432		
16.	No (16) W	7268		
17.	No (17) W	605		
18.	No (18) W	6544		
19.	No (19) W	8320		
20.	No (20) W	15105		
<b>Total</b>		<b>132,624</b>	<b>58,210</b>	<b>377</b>

Source: General Administration Department (Hlaing Thar Yar, 2024)

The questionnaire utilized a 5-point Likert scale where “strongly disagree”, “disagree”, “neutral”, “agree” and “strongly agree” were scored as 1,2,3,4 and 5, respectively. This structure enabled the study to collect comprehensive and quantifiable data reflecting how respondents perceive their risk of victimization, the extent of their precautionary behaviors and the underlying attitudes influencing their sense of personal and community safety.

According to Bowling (1997), the mean values of five-point Likert scale items are interpreted as follows;

**Table (4.3) Five-point Likert Scale for Respondents and Measuring Level**

Mean Score	Scale Range	Interpretation
1	1.00-1.80	Strongly Disagree
2	1.81-2.60	Disagree
3	2.61-3.40	Neutral
4	3.41-4.20	Agree
5	4.21-5.00	Strongly Agree

Source: Bowling, 1997

### 4.3 Survey Results

In this section, the survey finds out the residents on perceived risk of victimization in Hlaing Thar Yar Township, Yangon, Myanmar. The survey includes demographic data, respondents’ perceptions about victimization risks, evaluation of the environmental features and precautionary measures against victimization.

#### 4.3.1 Demographic Characteristics of the Respondents

The detailed demographic characteristics of the respondents are described in terms of gender, age, marital status, education level, occupation and duration of residence.

**Table (4.4) Demographic Characteristics of the Respondents**

Demographic Characteristics	Total	
	Respondents	Percent
<b>Gender</b>		
Male	129	34
Female	248	66
<b>Total</b>	<b>377</b>	<b>100</b>
<b>Age</b>		
18-30 years	141	37
31- 45 years	98	26
46-60 years	70	19
Above 60 years	68	18
<b>Total</b>	<b>377</b>	<b>100</b>
<b>Marital Status</b>		
Single	202	54
Married	175	46
<b>Total</b>	<b>377</b>	<b>100</b>
<b>Education Level</b>		
Primary School	25	7
Middle School	82	22
High School	128	33
Graduate	136	36
Master's degree and Higher	6	2
<b>Total</b>	<b>377</b>	<b>100</b>

Demographic Characteristics	Total	
	Respondents	Percent
<b>Occupation</b>		
Company Staff	10	3
Self-Business	20	5
Government Employee	46	12
Factory Worker	185	49
Student	89	24
Dependent	29	7
<b>Total</b>	<b>377</b>	<b>100</b>
<b>Duration of Residence</b>		
At least 1 year	57	15
2-5 years	151	40
5-10 years	122	33
More than 10 years	47	12
<b>Total</b>	<b>377</b>	<b>100</b>

Source: Survey Data (2025)

According to Table 4.3, the demographic characteristics of the respondents are classified by gender, age, marital status, education level, occupation and duration of residence. Regarding gender, the majority of respondents are female. This group accounts for 66% of respondents (248 respondents). Meanwhile, 34% of respondents are male (129 respondents). The largest age group is 18-30 years old, accounting for 37% (141 respondents). This is followed by the 31-45 age group, which accounts for 26% (98 respondents). Respondents above 60 years of age constitute 18% (68 respondents) and 19% (70 respondents) are aged 46 to 60 years.

Marital status is divided into two groups: single and married. According to Table (4.4), there are 202 single respondents (54%) and 175 married respondents (46%). Thus, married respondents form most of the sample households.

In terms of educational level, 128 respondents (33%) have completed high school, while 82 respondents (22%) have completed middle school. Thirty-five percent (136 respondents) are graduates, 7% (25 respondents) have only a primary education, and a small percentage 2% (6 respondents) have a master's degree or higher. Mostly, respondents are high school and graduated.

With regard to occupation, the majority among 377 survey respondents, 49% (185 respondents), are factory workers. Other categories include 24% (89 respondents) in student, 12% (46 respondents) as government staff, 7% (27 respondents) dependent, 5% (20 respondents) as self-business and 3% (10 respondents) as company staff.

In terms of residence duration in Hlaing Thar Yar township, 40% (151 respondents) have lived in the area for 2–5 years, follow by 33% (122 respondents) for 5–10 years. About 15% (57 respondents) have lived there for at least one year, and 12% (47 respondents) have lived for more than 10 years.

#### **4.3.2 Respondents Perceptions about Victimization Risks**

The following Table (4.5) and (4.6) describe respondents' experience about direct victimization and indirect victimization in the residence. There are ten statements for experience of respondents about victimization. Direct victimization questions analyze whether residents are exposed to crimes such as robbery, seizure, attack or sexual abuse. Indirect victimization questions generate the concepts such as events of crime such as robbery, seizure, attack or sexual abuse heard in friend, family, neighborhood and crime news followed from the media.

**Table (4.5) Respondents Perceptions about Victimization Risks (Direct Victimization)**

No.	Particulars	Percentage	
		Yes	No
1.	Have you had any of your personal belongings (such as your phone, wallet, or jewelry) stolen without being subjected to any physical violence?	74	26
2.	Have you been the victim of a robbery, where someone forcefully took your belongings from you?	66	44
3.	Has someone physically attacked, injured, or beaten you without using any weapon (such as a knife or other sharp object)?	59	41
4.	Has anyone attacked, injured, or beaten you with a sharp object or weapon (such as a knife)?	26	74
5.	Have you been exposed to any (verbal, non-verbal, physical) sexual abuse?	44	56

Source: Survey Data (2025)

The data indicates a concerning level of direct victimization, showing that residents have personally experienced various forms of crime. Theft without violence is the most frequently reported, suggesting that property crimes like pickpocketing or stealth theft are widespread. The high rate implies that such incidents may be common in crowded public spaces, such as markets or buses. 66% of respondents have been robbed with force. This could be attributed to poor street lighting, neighborhood areas and lack of rapid police response, among offenders. Additionally, 59% of respondents experienced physical assault without weapons because this may be overcrowded living conditions and alcohol-related behavior. While attacks involving weapons were less frequent, 26% still reported being assaulted with sharp objects, which remains a serious public safety concern. 44% of residents who reported exposure to sexual abuse, whether verbal, non-verbal, or physical, highlighting ongoing issues related to gender-based violence and harassment. This incident often occurs in crowded buses, public spaces, schools and workplaces.

**Table (4.6) Respondents Perceptions about Victimization Risks (Indirect Victimization)**

No.	Particulars	Percentage	
		Yes	No
1.	Has anyone that you know been exposed to theft without use of violence?	75	25
2.	Has someone you know been a victim of robbery, where they were forced to hand over their belongings?	76	24
3.	Has someone you know been physically attacked, injured, or beaten without the use of a weapon (such as a knife or other sharp object)?	72	28
4.	Has someone you know been attacked or injured by someone using a sharp object or weapon (such as a knife)?	72	28
5.	Has someone you know exposed to any (verbal, non-verbal, physical) sexual abuse?	61	39

Source: Survey Data (2025)

According to the table (4.6), the findings related to indirect victimization where respondents revealed crimes experienced by people they know within the community. A large majority, 75%, indicated that someone they know had been a victim of theft without violence and 76% reported that an acquaintance had experienced a robbery involving force. These are the most commonly reported, suggesting that non-violent property crimes and robbery are widespread and affect many households. In terms of physical violence, 72% stated that someone they know had been physically attacked without a weapon, and an equal 72% had witnessed or heard of someone being assaulted with a sharp object or weapon, indicating that weapon-related violence is also a persistent threat in their environment. Additionally, 61% reported knowing someone who had experienced sexual abuse, pointing to the significant presence of sexual abuse within their communities. This highlights the pervasiveness of gender-based violence that often surrounds such offenses.

### 4.3.3 Environmental Features

Residents' perception of security is a fact that is shaped by with interaction process. If residents see in their environments abandoned buildings, gangs, and incivility, they can think that the area is vulnerable to crime. The study evaluates the regional features of Hlaing Thar Yar Township. Environmental feature questions measure the physical, environmental and social incivility. Questions related to environmental features are asked according to 5 points Likert scale.

**Table (4.7) Environmental Features**

No.	Particulars	Mean	S.D
1.	Theft is a serious problem in my area.	4.06	0.81
2.	Robbery is a significant issue affecting this environment.	3.49	1.16
3.	Physical assaults occur frequently and are a cause for concern in my area.	3.02	0.81
4.	Sexual abuse (verbal or physical) is a serious issue in my area.	3.53	1.09
5.	Individuals who behave loudly or create disturbances are a common problem here.	2.52	1.11
6.	Graffiti, posters, or wall writings are visually disturbing and reflect disorder in environment.	2.03	0.84
7.	Lighting is insufficient in many areas and contributes to a sense of insecurity.	3.52	1.14
8.	Intoxicated or drunken individuals are often seen in this area and make it feel unsafe.	4.05	0.82
9.	Uncollected garbage or poor cleanliness is a visible problem in this environment.	2.49	1.12
10.	There is a lack of visible security personnel or patrols, it contributes to feelings of security in this area.	2.46	1.09
	<b>Overall Mean</b>	<b>3.12</b>	

Source: Survey Data (2025)

According to the table (4.7), analyzing residents' evaluation the environmental features in Hlaing Thar Yar Township, the most significant environmental issue observed with the average 4.06 is theft. Residents strongly perceive theft as a major issue due to frequent incidents in homes, markets or public areas. Drunken individuals make the area unsafe and high concern causing fear, or public disturbances. Robbery, sexual abuse and poor lighting are moderate concern with the average 3.49, 3.53 and 3.52. Robbery often occurs especially in the form of street snatching or break-ins. As verbal sexual abuse in the streets, on buses or near teashops might contribute, it is especially concern for women and younger residents. Poor lighting contributes to a sense of insecurity as it creates opportunities for crime especially for people walking at night. Assaults are perceived neutrally with the average 3.02, because they are not common across all areas but may still happen in violence exists, especially among youth or men. Uncollected garbage or poor cleanliness is a visible problem contributes to a perception of low concern because residents are highly familiar with their surroundings. The statement "there is a lack of visible security personnel or patrols, it contributes to feelings of security in this area" indicates low concern for the residents because visible security patrols reassure residents and deter criminals in high crime areas. When patrols are absent, residents feel more vulnerable and perceive the area as less safe. Public nuisance behavior exists but is not a concern for residents. Such disturbances may occur occasionally, when people gather but they are not seen as threats. This may become a habitual part of their environment, leading residents to perceive them as a routine occurrence. The graffiti, posters and wall writing reflect environmental disorder is not a major concern for the residents because it is culturally normalized or accustomed to informal advertising and don't view them as damaging or dangerous. These findings suggest that personal safety concerns especially related to theft, violence, and drunken behavior are more dominant in shaping residents' sense of insecurity.

#### **4.3.4 Perceived Risk of Victimization**

Perceived risk of victimization measure how individuals feel about their likelihood of being victimized. This is a key component in understanding how fear of crime influences daily behavior such as avoidance of certain places and the adoption of precautionary actions. In order to explore residents' attitudes and feelings toward crime and personal safety, participants were asked a series of questions related to their perceptions of risk.

**Table (4.8) Perceived Risk of Victimization**

No.	Particulars	Mean	S.D
1.	Personal safety in the neighborhood is a significant concern, with a perceived risk of becoming a crime victim at any time.	3.41	1.13
2.	There is concern about experiencing cyberbullying online.	3.93	0.82
3.	Precautionary measures such as locking doors or avoiding certain areas are commonly taken to prevent victimization.	4.00	0.82
4.	Security, property and the well-being of the family are viewed with deep concern.	2.94	1.37
5.	Certain areas in the community are seen as more unsafe, and crime rates are believed to have increased in recent years.	2.47	1.06
6.	Women are perceived to be at greater risk of becoming victims of crime compared to men.	4.10	0.82
7.	Public awareness campaigns are viewed as a potential means to reduce victimization.	2.54	1.11
	<b>Overall Mean</b>	<b>3.34</b>	

Source: Survey Data (2025)

The survey results on perceived risk of victimization indicate a generally moderate level of concern among respondents, with certain issues standing out more prominently. Respondents strongly agreed that women are more likely to become victims of crime than men with a mean score of 4.10, due to gender-based vulnerability and women are more exposed to sexual abuse (verbal, non-verbal, physical) especially in poorly lit areas. Residents used to take active steps to protect themselves, such as locking doors or avoiding certain areas due to direct or indirect exposure to crimes in the community. Concern about cyberbullying is highly because increasing smartphone and using social media, especially among youth, is common and hard to control. It exposes users to happen online threats. The statement “personal safety in the neighborhood is a significant concern, with a perceived risk of becoming a crime victim at any time” is a moderate concern which can be overcrowding and rapid urbanization, frequent petty crimes presence in areas. “Security, property and the well-being of the family are viewed with deep concern” was a moderate concern. Households with children or elders may express more concern, while others may feel relatively safe. This reflects a mixed view possibly depending on age or family type and previous

victimization experiences. Perceptions of rising crime in specific areas and belief in the effectiveness of public awareness campaigns were relatively lower. Residents showed low agreement with the belief that crime has increased in recent years due to habituation to local conditions and lack of accurate crime reporting. Resident haven't seen public awareness campaigns work effectively, because they don't believe awareness alone is enough, or they simply aren't aware of such campaigns.

#### 4.3.5 Precautionary Measures Against Victimization

Residents' precautionary measures against victimization in Hlaing Thar Yar were accessed the behavioral responses individuals adopt to reduce their risk of becoming a victim of crime. These precautionary measures are often influenced by perceived risk, previous victimization, or exposure to crime-related information. Understanding these behaviors provides valuable insight into how people navigate feelings of vulnerability, make decisions about personal safety, and adapt their routines to avoid potential threats.

**Table (4.9) Precautionary Measures Against Victimization**

No.	Particulars	Mean	S.D
1.	Certain neighborhoods or areas perceived to have high crime rates are rarely avoided.	2.55	1.11
2.	Carrying personal protective devices, such as pepper spray or a safety alarm, is a common sense of security in public spaces.	2.95	0.82
3.	Mobile safety applications and digital tools like GPS tracking and emergency alerts are used as part of routine safety practices.	2.49	1.08
4.	Before commuting alone or visiting unfamiliar locations, I regularly inform someone I trust about my whereabouts and expected return time.	3.97	0.80
5.	Sharing of personal information in public or online is intentionally limited to reduce the risk of being targeted.	2.52	1.09
6.	Displaying valuable items such as jewelry in public is consciously avoided to minimize criminal attention.	2.45	1.10
7.	Information about local crime trends or safety warnings is actively sought out to stay informed and adjust precautionary behavior.	3.43	1.11
<b>Overall Mean</b>		<b>2.91</b>	

Source: Survey Data (2025)

According to the table (4.9), precautionary behaviors reveal that respondents generally take action to protect themselves against potential victimization. The survey results on precautionary measures against victimization reveal the varying levels of safety behavior adopted by respondents. The most commonly practiced measure was informing someone about one's whereabouts before commuting alone, with a high mean of 3.97, indicating a strong awareness of personal safety. This is a cultural behavior in many Asian societies and safety habit where people feel more secure knowing someone is aware of their whereabouts. Seeking out local crime or safety information moderately high score because residents are becoming more interested in local safety news, and awareness of local crime events are increased in social media. The statement "carrying personal protective devices, such as pepper spray or a safety alarm, is a common sense of security in public spaces" shows the moderate score that some individuals use pepper spray or alarms, but it's not widespread. Rarely Avoiding certain areas to have high crime rates generally disagreed because residents always tend to avoid areas, they associate with danger because of personal safety concerns, especially if they have heard of or experienced crimes in those places. Limiting personal information shared publicly, and avoiding the display of valuable items in public, indicating these measures are less commonly practiced because many residents may lack awareness of the risks associated with such behaviors, particularly in digital or public spaces. These behaviors are not strongly associated with the threat of crime in the minds of residents. The use of digital safety tools showed low agreement due to residents from low-income households may have basic phones without app capability, or they may not trust digital tools due to lack of experience or fear of data misuse.

## **CHAPTER V**

### **CONCLUSION**

#### **5.1 Findings**

This study explores the perceived risk of victimization among residents of Hlaing Thar Yar Township in the Yangon Region, focusing on both the demographic and environmental factors that influence fear of crime and precautionary behaviors. The findings indicate that victimization both direct and indirect is a significant concern in this area. A high proportion of respondents reported personal experiences with theft, robbery, and physical assault, while many others had indirect exposure to victimization through friends, family, or media. These findings highlight the pervasiveness of criminal activity in Hlaing Thar Yar township and its deep psychological impact on the community.

With regard to demographic, among 377 respondents, a majority were female (63%), aged 18–30 and employed primarily as factory workers. This demographic composition revealed that young women in industrial employment settings are particularly vulnerable to victimization.

The survey distinguished between direct and indirect victimization experiences, offering a comprehensive view of the residents' exposure to various forms of crime. In terms of direct victimization, a substantial 74% of respondents reported having their personal belongings (such as phones, wallets, or jewelry) stolen without any physical violence, indicating that petty theft is a widespread and common issue within the township. 66% of respondents stated they had been victims of robbery, where their belongings were forcefully taken, suggesting a high prevalence of more aggressive property crimes. Physical assaults without the use of weapons were also common, with 59% of respondents reporting such experiences, pointing to frequent interpersonal violence. While a significant minority, 26% of respondents, had experienced attacks, injuries, or beatings with a sharp object or weapon, highlighting the presence of serious violent crime within the community. Furthermore, 44% of respondents reported exposure to some form of sexual abuse, whether verbal, non-verbal, or physical, underscoring a critical level of sexual victimization.

Regarding indirect victimization, the rates were consistently higher than direct experiences, which strongly reinforces the notion that crime profoundly impacts individuals beyond their direct personal encounters. 75% of respondents knew someone who had experienced theft without violence, while 76% knew someone who had been a victim of robbery. Similarly, 72% knew someone who had been physically attacked without a weapon, and an equal 72% knew someone who had been attacked with a weapon. Additionally, 61% knew someone who had been exposed to sexual abuse. These consistently high percentages for indirect victimization vividly underscore the pervasive nature of crime in Hlaing Thar Yar, affecting residents not only through their personal experiences but also significantly through their social networks and exposure to crime-related information from various media.

Residents' perceptions of their environment significantly shaped their sense of insecurity and vulnerability. The survey results largely indicated agreement that theft, robbery, physical assaults and sexual abuse are serious problems, with the presence of intoxicated individuals and insufficient lighting being particularly high concerns. These environmental factors, along with signs of disorder like graffiti or uncollected garbage, contribute to a pervasive sense of insecurity.

The overall perceived risk of victimization was notably high, especially concerning personal safety and cyberbullying. While residents expressed deep concern for family security, their reported engagement in precautionary behaviors was somewhat moderate. For instance, actively seeking information about crime trends was common, but the use of personal protective devices, avoidance of high-crime areas, or consistent use of digital safety tools were less frequently practiced, suggesting a gap between perceived risk and consistent behavioral adaptation.

## **5.2 Suggestions**

Based on the findings of this study, several recommendations are proposed to address the high levels of perceived risk and actual victimization among residents of Hlaing Thar Yar Township. First, improving urban infrastructure is crucial. Local authorities should prioritize better street lighting, waste management, and the removal of environmental hazards such as abandoned areas, which contribute to a sense of disorder and insecurity. Increasing the visibility and presence of law enforcement personnel in vulnerable areas, especially near industrial zones and residential

neighborhoods, would also help deter criminal activities and enhance public trust in security institutions.

Community engagement and public awareness initiatives are essential in fostering a culture of prevention. Programs such as neighborhood watch groups, community meetings, and information-sharing platforms can empower residents to report suspicious activities and take collective responsibility for safety. Public awareness campaigns both offline and online should be launched to educate the population about crime prevention techniques, digital safety, and available victim support services. In particular, these campaigns should target women, youth, and migrant workers who are disproportionately affected by victimization.

Specific measures must be taken to protect vulnerable groups, especially women and factory workers. Employers should be encouraged or required to implement workplace safety policies, including mechanisms for reporting harassment and abuse. Legal frameworks should be strengthened to ensure better protection and recourse for victims of gender-based violence. Additionally, establishing accessible psychological counseling, legal aid, and emergency hotlines can support victims and encourage them to come forward without fear of stigma or retaliation.

Social development efforts such as education and job training programs should be promoted to reduce economic vulnerability and provide alternative paths for at-risk youth. Vocational education, particularly for young people and female residents, would enhance employment opportunities and reduce reliance on informal or exploitative work settings where victimization risk is high.

Law enforcement agencies should be equipped with better training and resources to respond effectively and sensitively to various types of crimes, including cybercrime and domestic violence. Strengthening institutional accountability and eliminating corruption within the police force are also key to improving community-police relations. These multi-level interventions combining environmental design, social programs, legal reform, and community participation are vital for reducing both the fear and the reality of victimization in Hlaing Thar Yar Township and similar urban areas across Myanmar.

## REFERENCES

- Aung Myint Myat. (2024). A STUDY ON BENEFITS OF CRIME PREVENTION IN NAY PYI TAW (Case Study: Zabuthiri Township). MERAL Portal.
- Briere, J., & Jordan, C. E. (2004). Violence against women: Outcome complexity and implications for assessment and treatment. *Journal of Interpersonal Violence*, 19(11), 1252–1276.
- Bursik, R.J., Grasmick, H.G (1993). *Neighborhoods and Crime: The Dimensions of Effective Community Control*. New York: Lexington Books.
- Clarke, R. V. (1997). *Situational crime prevention: Successful case studies* (2nd ed.). Harrow and Heston.
- Clemente, F, Kleiman.M.B. (1977) “Fear of crime in the United States: a multivariate analysis.” *Social Forces* 56 (December): 519-531.
- Ditton, J., Farrall, S., Bannister, J., Elizabeth, G., & Pease, K. (1999). Reactions to Victimization: Why has anger been ignored? *Crime Prevention and Community Safety: An International Journal*, 1, 37-54.
- Doerner, W. G., & Lab, S. P. (2017). *Victimology* (8th ed.). Burlington, MA: Elsevier.
- Ferraro, K. F., & LaGrange, R. L. (1987). The measurement of fear of crime. *Sociological Inquiry*, 57(1), 70–97.
- Finkelhor, D., & Asdigian, N. L. (1996). Risk factors for youth victimization: Beyond a lifestyles/routine activities theory approach. *Violence and Victims*, 11(1), 3–19.
- Fisher B.S. and Sloan J.J. (2003). “Unraveling the fear of victimization among college women: Is the “shadow of sexual assault hypothesis” supported?”, *Justice Quarterly* 20, pp. 633–659.
- Garafalo, J., (1979) “Victimization and the fear of crime” *Journal of Research in Crime and Delinquency*, January, 80-97.
- Gardner, C.B (1995). *Passing by: Gender and Public Harassment in Public Space* Berkeley, CA: University of California Press.
- Hale, C., (1996) “Fear of Crime: A Review of the Literature”, *International Review of Victimology* 4(2): 79-150).
- Karmen, A. (2012). *Crime victims: An introduction to victimology*. Belmont, CA:Wadsworth.
- Karmen, A. (2015). *Crime victims: An introduction to victimology* (9th ed.). Cengage Learning.

- Killias, M. (1990). 'Vulnerability: Towards a Better Understanding of a Key Variable in the Genesis of Fear of Crime', *Violence and Victims* 5, 97-108.
- Markowitz, F.E, Bellair, P.E, Liska A.E, Liu J. (2001). Extending social disorganization theory: modeling the relationships between cohesion, disorder, and fear. *Criminology* 39(2):293–319.
- Maxfield, M.G (1984). "The Limits of Vulnerability in Explaining Fear of Crime: A Comparative Neighborhood Analysis" *Journal of Research in Crime and Delinquency*, 21: 233-250.
- McCrea, R. Shyy, T. Western, J. Stimson, R.J. (2005) Fear of crime in Brisbane: Individual, social and neighbourhood factors in perspective *Journal of Sociology*, Mar. 41:7-27.
- Sampson, R. J., Raudenbush, S. W., & Earls, F. (1997). Neighborhoods and violent crime: A multilevel study of collective efficacy. *Science*, 277(5328), 918–924. <https://doi.org/10.1126/science.277.5328.918>
- Skogan, W. G. (1990). *Disorder and decline: Crime and the spiral of decay in American neighborhoods*. University of California Press.
- Skogan, W. G. (1993). *Disorder and Decline: Crime and the Spiral of Decay in American Neighborhoods*. University of California Press.
- Transparency International. (2021). *Corruption Perceptions Index 2021: Myanmar*. Retrieved from <https://www.transparency.org>
- UN Women. (2022). *Gender-Based Violence in Myanmar: Trends and Gaps in Protection*. Retrieved from <https://asiapacific.unwomen.org>
- UNESCO. (2021). *Education and Youth Vulnerabilities in Southeast Asia: Country Report on Myanmar*.
- UNHCR. (2022). *Global Trends: Forced Displacement in 2022*. Retrieved from [www.unhcr.org](http://www.unhcr.org)
- United Nations (UN). (2010). *UN Convention on Justice and Support for Victims of Crime and Abuse of Power*. Retrieved April 15, 2015, from <http://www.worldsocietyofvictimology.org/publications/Draft%20Convention.pdf>
- UNODC. (2020). *Crime and Security Report: Myanmar*. United Nations Office on Drugs and Crime.
- Waller, I. (2006). *Less law, more order: The truth about reducing crime*. Praeger Security International.

- Warr, M. (1984). Fear of victimization: Why are women and the elderly more afraid? *Social Science Quarterly*, 65(3), 681–702.
- Warr, M. (1985) “Fear of Rape among Urban Women” *Social Problems* 32:238-250.
- Warr, M. (1990). ‘Dangerous Situations: Social Context and Fear of Victimization’, *Social Forces*, 68(3):891-907.
- Wilson, J. Q., & Kelling, G. L. (1982). Broken windows: The police and neighborhood safety. *The Atlantic Monthly*, 249(3), 29–38.

## **APPENDIX**

### **A STUDY ON PERCEIVED RISK OF CRIMINAL VICTIMIZATION IN HLAING THAR YAR TOWNSHIP, YANGON REGION**

Dear participants,

My name is Ma July Myint. I am a student of Master of Public Administration in Yangon University of Economics. I am researching on “A Study on Perceived Risk of Criminal Victimization in Hlaing Thar Yar Township, Yangon Region”. The survey aims for only academic research. Please tick in the appropriate box are provided for those questions. The questionnaire will take around five minutes to complete and please help to answer the questions carefully. Thank you very much for your participating.

Best Regards,

Ma July Myint

MPA -22 (22<sup>nd</sup> Batch- Online)

Yangon University of Economics

## **Part (A): Demographic Characteristics of Respondents**

1. Gender

Male  Female

2. Age:

18-30 years  31-45 years  46- 60 years  Above 60 year

3. Marital Status:

Single  Married

4. Education Level:

Primary School  Middle School  High School  Graduate

Master's degree or higher

5. Occupation

Company Staff  Self-Business  Government Employee

Factory Worker  Student  Dependent

6. Duration of Residence

At least one year  2–5 years  5–10 years  More than 10 years

**Part (B): Respondents Perceptions about Victimization Risks**

No.	Statement	YES	NO
<b>(I) Direct Victimization</b>			
1.	Have you had any of your personal belongings (such as your phone, wallet, or jewelry) stolen without being subjected to any physical violence.		
2.	Have you been the victim of a robbery, where someone forcefully took your belongings from you.		
3.	Has someone physically attacked, injured, or beaten you without using any weapon (such as a knife or other sharp object)		
4	Has anyone attacked, injured, or beaten you with a sharp object or weapon (such as a knife).		
5.	Have you been exposed to any (verbal, non-verbal, physical) sexual abuse.		
<b>(II) Indirect Victimization</b>			
1.	Has anyone that you know been exposed to theft without use of violence.		
2.	Has someone you know been a victim of robbery, where they were forced to hand over their belongings		
3.	Has someone you know been physically attacked, injured, or beaten without the use of a weapon (such as a knife or other sharp object).		
4.	Has someone you know been attacked or injured by someone using a sharp object or weapon (such as a knife).		
5.	Has someone you know exposed to any (verbal, non-verbal, physical) sexual abuse.		

**Part (C): Environmental Features**

Please choose your opinion on each of the following questions by using the Five Likert Scales.

(1 = Strongly Disagree, 2 = Disagree, 3 = Neutral, 4 = Agree, 5 = Strongly Agree)

No.	Statement	1	2	3	4	5
1.	Theft is a serious problem in my area.					
2.	Robbery is a significant issue affecting this environment.					
3.	Physical assaults occur frequently and are a cause for concern in my area.					
4.	Sexual abuse (verbal or physical) is a serious issue in my area.					
5.	Individuals who behave loudly or create disturbances are a common problem here.					
6.	Graffiti, posters, or wall writings are visually disturbing and reflect disorder in environment.					
7.	Lighting is insufficient in many areas and contributes to a sense of insecurity.					
8.	Intoxicated or drunken individuals are often seen in this area and make it feel unsafe.					
9.	Uncollected garbage or poor cleanliness is a visible problem in this environment.					
10.	There is a lack of visible security personnel or patrols, it contributes to feelings of security in this area.					

**Part (D): Perceived Risk of Victimization**

Please choose your opinion on each of the following questions by using the Five Likert Scales.

(1 = Strongly Disagree, 2 = Disagree, 3 = Neutral, 4 = Agree, 5 = Strongly Agree)

No.	Statement	1	2	3	4	5
1.	Personal safety in the neighborhood is a significant concern, with a perceived risk of becoming a crime victim at any time.					
2.	There is concern about experiencing cyberbullying online.					
3.	Precautionary measures such as locking doors or avoiding certain areas are commonly taken to prevent victimization.					
4	Security, property and the well-being of the family are viewed with deep concern.					
5.	Certain areas in the community are seen as more unsafe, and crime rates are believed to have increased in recent years.					
6.	Women are perceived to be at greater risk of becoming victims of crime compared to men.					
7.	Public awareness campaigns are viewed as a potential means to reduce victimization.					

**Part (E): Precautionary Measures Against Victimization**

Please choose your opinion on each of the following questions by using the Five Likert Scales.

(1 = Strongly Disagree, 2 = Disagree, 3 = Neutral, 4 = Agree, 5 = Strongly Agree)

No.	Statement	1	2	3	4	5
1.	Certain neighborhoods or areas perceived to have high crime rates are rarely avoided.					
2.	Carrying personal protective devices, such as pepper spray or a safety alarm, is a common sense of security in public spaces.					
3.	Mobile safety applications and digital tools like GPS tracking and emergency alerts are used as part of routine safety practices.					
4.	Before commuting alone or visiting unfamiliar locations, I regularly inform someone I trust about my whereabouts and expected return time.					
5.	Sharing of personal information in public or online is intentionally limited to reduce the risk of being targeted.					
6.	Displaying valuable items such as jewelry in public is consciously avoided to minimize criminal attention.					
7.	Information about local crime trends or safety warnings is actively sought out to stay informed and adjust precautionary behavior.					