



WHY DO PEOPLE GAMBLE?

Betting on an outcome determined by chance, hoping to win something of value.

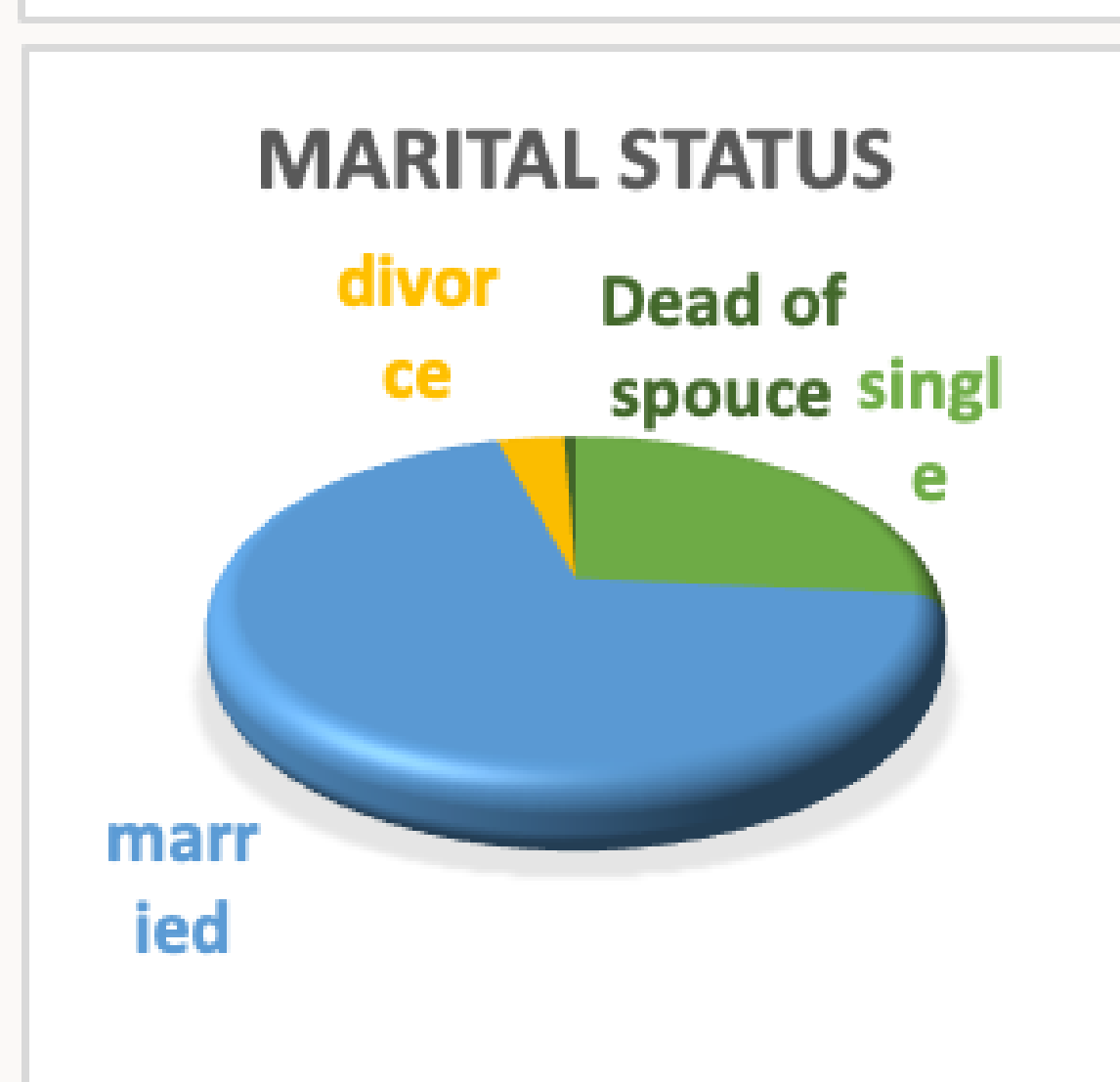
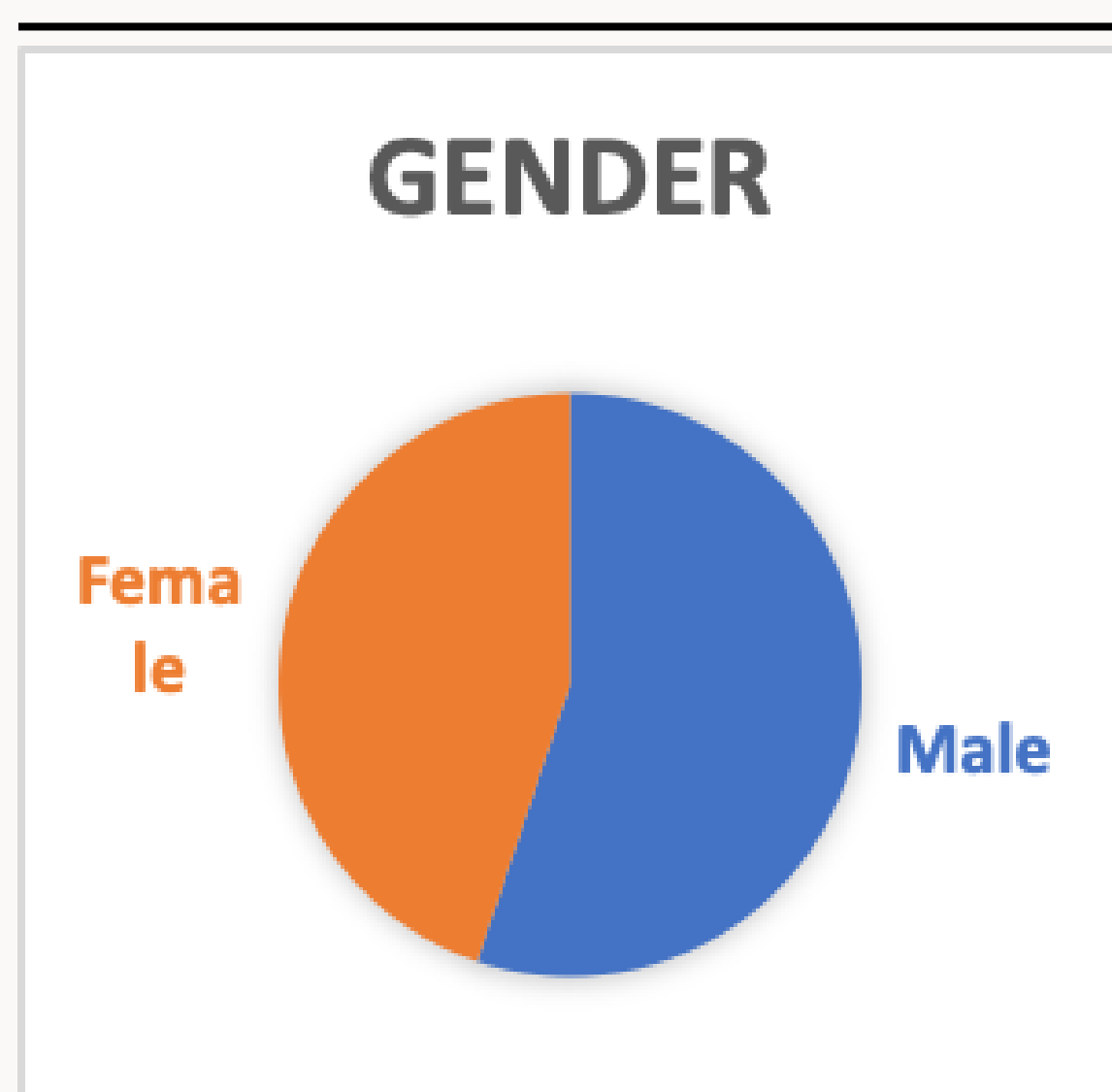
Dual nature:

- Positive: Entertainment and economic benefits.
- Negative: Psychological, financial, and social harm, especially addiction.

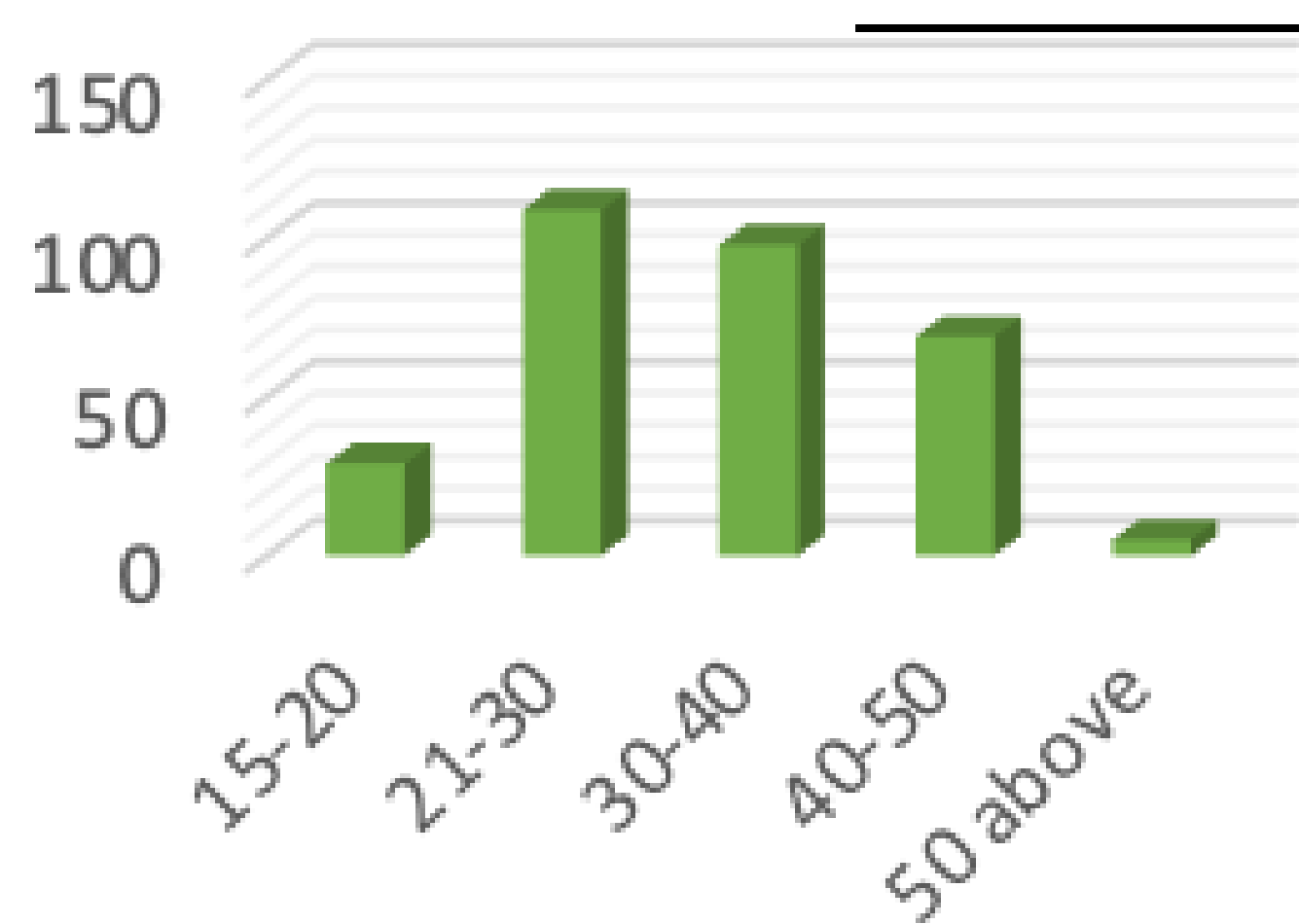
OBJECTIVES

This study aims to assess the prevalence of gambling in Hlaing Thar Yar Township and evaluate its impact on household financial stability, emotional well-being, and family relationships.

Discover More →



Age Group

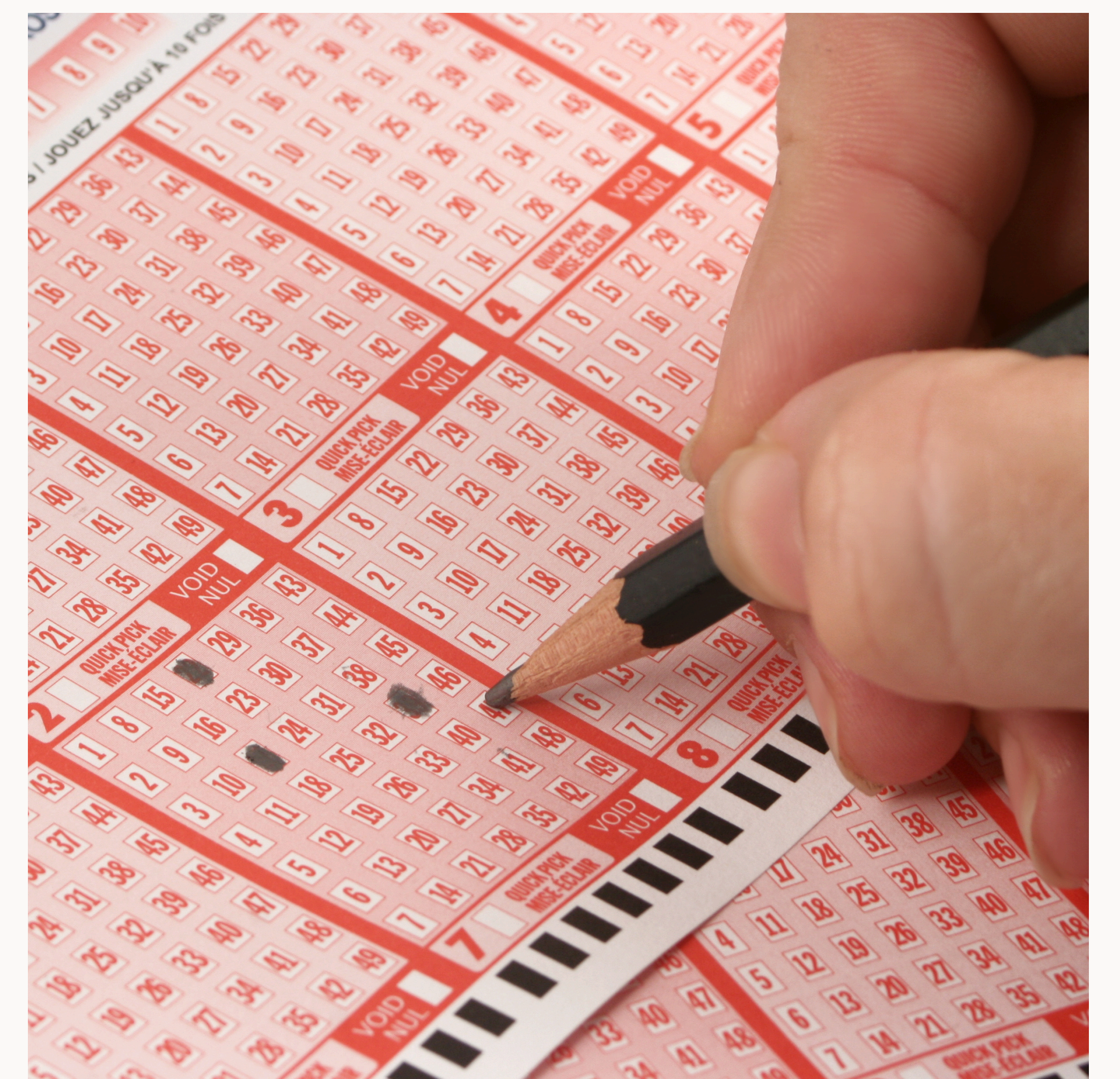


The most popular types of gambling in Myanmar



Key Finding Area

1. Demographic Information
2. Gambling Habits
3. General Well-being
4. Financial Impact
5. Emotional Impact
6. Impact on Family and Community
7. Legal Impact
8. Problem Gambling Severity Index (PGSI)



CASE STUDY – HLAING THAR YAR TOWNSHIP

- **Prevalence:** High gambling rates among low-income workers.
- **Root causes:**
 - a. Financial instability.
 - b. Challenging living conditions.
 - c. Gambling as a coping mechanism.
- **Consequences:**
 - Addiction.
 - Worsened financial and social struggles.

